



OPEN ACCESS

Original research

Role of genetics in amyotrophic lateral sclerosis: a large cohort study in Chinese mainland population

Yong-Ping Chen,¹ Shi-Hui Yu,² Qian-Qian Wei,¹ Bei Cao,¹ Xiao-Jing Gu,¹ Xue-Ping Chen,¹ Wei Song,¹ Bi Zhao,¹ Ying Wu,¹ Ming-Ming Sun,² Fei-Fei Liu,² Yan-Bing Hou,¹ Ru-Wei Ou,¹ Ling-Yu Zhang,¹ Kun-Cheng Liu,¹ Jun-Yu Lin,¹ Xin-Ran Xu,¹ Chun-Yu Li,¹ Jing Yang,¹ Zheng Jiang,¹ Jiao Liu,¹ Yang-Fan Cheng,¹ Yi Xiao,¹ Ke Chen,³ Fei Feng,⁴ Ying-Ying Cai,⁵ Shi-Rong Li,⁶ Tao Hu,⁷ Xiao-Qin Yuan,⁸ Xiao-Yan Guo,⁹ Hui Liu,¹⁰ Qing Han,¹¹ Qing-Qing Zhou,¹² Na Shao,¹³ Jian-Peng Li,¹⁴ Ping-Lei Pan,¹⁵ Sha Ma,¹⁶ Hui-Fang Shang ¹

► Additional supplemental material is published online only. To view, please visit the journal online (<http://dx.doi.org/10.1136/jmedgenet-2021-107965>).

For numbered affiliations see end of article.

Correspondence to

Professor Hui-Fang Shang, Department of Neurology, Sichuan University, Chengdu, China; hfsang2002@126.com

Y-PC, S-HY, Q-QW and BC contributed equally.

Received 11 May 2021
Accepted 5 August 2021



© Author(s) (or their employer(s)) 2021. Re-use permitted under CC BY-NC. No commercial re-use. See rights and permissions. Published by BMJ.

To cite: Chen Y-P, Yu S-H, Wei Q-Q, et al. *J Med Genet* Epub ahead of print: [please include Day Month Year]. doi:10.1136/jmedgenet-2021-107965

ABSTRACT

Background A large number of new causative and risk genes for amyotrophic lateral sclerosis (ALS) have been identified mostly in patients of European ancestry. In contrast, we know relatively little regarding the genetics of ALS in other ethnic populations. This study aims to provide a comprehensive analysis of the genetics of ALS in an unprecedented large cohort of Chinese mainland population and correlate with the clinical features of rare variants carriers.

Methods A total of 1587 patients, including 64 familial ALS (FALS) and 1523 sporadic ALS (SALS), and 1866 in-house controls were analysed by whole-exome sequencing and/or testing for G4C2 repeats in *C9orf72*. Forty-one ALS-associated genes were analysed.

Findings 155 patients, including 26 (40.6%) FALS and 129 (8.5%) SALS, carrying rare pathogenic/likely pathogenic (P/LP) variants of ALS causative genes were identified. *SOD1* was the most common mutated gene, followed by *C9orf72*, *FUS*, *NEK1*, *TARDBP* and *TBK1*. By burden analysis, rare variants in *SOD1*, *FUS* and *TARDBP* contributed to the collective risk for ALS ($p < 2.5 \times 10^{-6}$) at the gene level, but at the allelic level *TARDBP* p.Gly294Val and *FUS* p.Arg521Cys and p.Arg521His were the most important single variants causing ALS. Clinically, P/LP variants in *TARDBP* and *C9orf72* were associated with poor prognosis, in *FUS* linked with younger age of onset, and *C9orf72* repeats tended to affect cognition.

Conclusions Our data provide essential information for understanding the genetic and clinical features of ALS in China and for optimal design of genetic testing and evaluation of disease prognosis.

BACKGROUND

Amyotrophic lateral sclerosis (ALS) is one of the most common incurable neurodegenerative diseases that primarily affect the motor neurons, eventually resulting in progressive paralysis and death 3–5 years after disease onset.¹ Approximately 5%–10% of patients with ALS have a family history (FALS), while the remaining cases are sporadic (SALS).²

To date, variants in more than 120 genes have been reported to be implicated in ALS (<https://alsod.ac.uk>). Variants in ~40 genes have been shown to cause or significantly increase the risk of ALS, although the pathogenicity of variants in some of the genes remains to be validated. Among them, *C9ORF72*, *SOD1*, *FUS* and *TARDBP* are the most common causative genes, accounting for 54.5% of FALS and 7.5% of SALS in Caucasians.³ Genetic studies of ALS in other populations have been reported, but largely in a small number of ALS genes and in small-sized cohorts. Comprehensive genetic studies of large ALS cohorts with unbiased approaches, such as whole-exome sequencing (WES), are limited.

In the current study, using repeat-primed PCR (RP-PCR) and WES, we studied a total of 1587 patients with ALS and 1866 inhouse controls from a cohort of Chinese population, which represents one-fifth of the world's population, to characterise the genetic and clinical spectrum of ALS in Chinese population and provide essential information for ALS research and clinical practice. The study has the following aims: (1) systematically identify pathogenic and likely pathogenic (P/LP) (for causative genes) or deleterious (for new, needing to be confirmed or risk genes) variants of 41 known ALS-associated genes in an unprecedented large cohort of Chinese patients with ALS, summarise and compare the mutation frequencies of FALS and SALS, and perform gene/allele-based burden analyses to reveal whether rare variants of these genes contribute collectively to ALS; and (2) investigate the genotype–phenotype correlation in Chinese patients with ALS, which will benefit genetic counselling, early diagnosis intervention and prognostic assessment.

METHODS

Subjects

Based on the El Escorial criteria for ALS,⁴ a total of 1587 patients with clinically definite and probable ALS admitted to the Department of Neurology of West China Hospital between December 2010 and June 2019 were recruited for this study. According

to a previous study,⁵ patients with an identifiable family history of ALS among first-degree, second-degree or third-degree relatives were classified as ‘familial’ (FALS); otherwise patients were classified as ‘sporadic’ (SALS). For FALS cases, only the proband was analysed in the current study. Demographic and clinical data were collected. ALS that occurred in patients less than 45 years of age was considered as early-onset ALS. The Revised ALS Functional Rating Scale (ALSFRS-R) was applied to assess disease severity. According to a previous study,⁶ the progression rate was defined as: $(48 - \text{‘baseline’ ALSFRS-R}) / \text{time from onset to ‘baseline’ (months)}$. If the ALSFRS-R decline was more than 0.5 per month, it was classified as fast progression. As described in our previous studies,^{7,8} cognition and frontal lobe functions were assessed using the Addenbrooke’s Cognitive Examination-Revised and the Frontal Assessment Battery tests, respectively. A total of 1866 inhouse Chinese controls whose mean age was 57.9 ± 9.0 years and had neither a medical nor family history of neurodegenerative disorders were included to assess the collective risk of rare variants for each candidate gene. All subjects who participated in the study provided informed consent prior to their participation. Genomic DNA was collected from peripheral blood leucocytes using standard phenol-chloroform procedures.

Genetic analysis

Genetics analysis, including WES and RP-PCR for testing G4C2 repeats of *C9orf72*, data analysis, variant annotation, and haplotype analysis of special P/LP variants identified

in more than one patient have been described in the online supplemental methods or in our previous studies.^{9,10} According to the Amyotrophic Lateral Sclerosis Online Database (<https://alsod.ac.uk/>), 41 ALS causative/associated genes with varying degrees of genetic evidence involved in the study were classified into two categories, including 16 definitive ALS genes (group I, GI, or causative genes) and 25 new, needing to be validated or risk genes (group II, GII) (online supplemental table S1).

Variant identification and burden analysis

Considering the low incidence of ALS, we defined variants with minor allele frequency in the Genome Aggregation Database-East Asian (GnomAD-EAS) less than 0.0001 as rare variants. For the GI genes, we classified variants as P/LP, variants of uncertain significance (VUS), and likely benign or benign according to the American College of Medical Genetics (ACMG) recommendations.¹¹ For the GII genes, we classified variants as deleterious or non-deleterious variants according to five functional prediction tools. The methods used for variant identification are described in detail in the online supplemental methods. The sequencing kernel association test (SKAT) and Fisher’s exact test were performed on the gene/allelic basis for genetic investigations into the collective risk of rare variants in 40 genes for ALS (except *C9orf72*). Rare variants obtained from ALS by WES were assigned to the case group, and rare variants from 1866 Chinese controls from WES were used as the control group (figure 1).

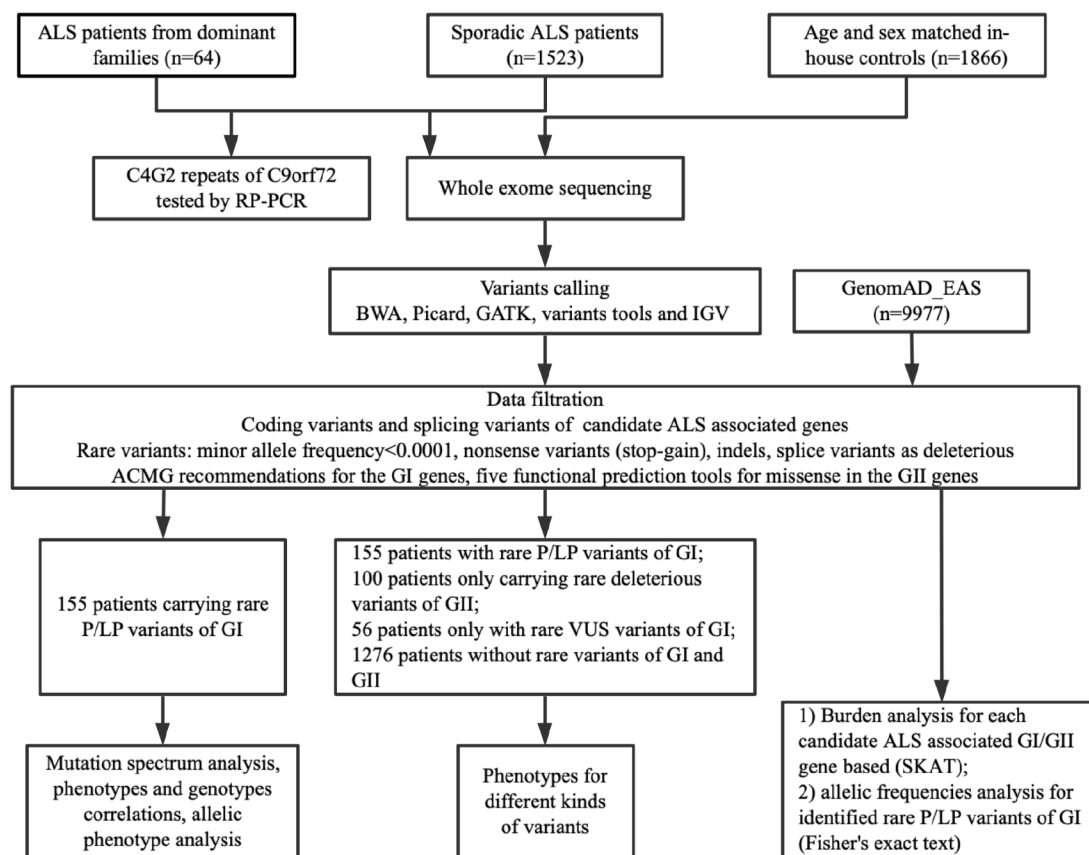


Figure 1 Flow chart of the study. ACMG, American College of Medical Genetics; ALS, amyotrophic lateral sclerosis; BWA: Burrows-Wheeler Aligner; GATK: The Genome Analysis Toolkit; GI, group I, causative genes; GII, group II, new, needing to be confirmed or risk genes; GnomAD-EAS, Genome Aggregation Database-East Asian; IGV: Integrative Genomics Viewer; P/LP, pathogenic or likely pathogenic; RP-PCR, repeat-primed PCR; SKAT, sequencing kernel association test; VUS, variants of uncertain significance.

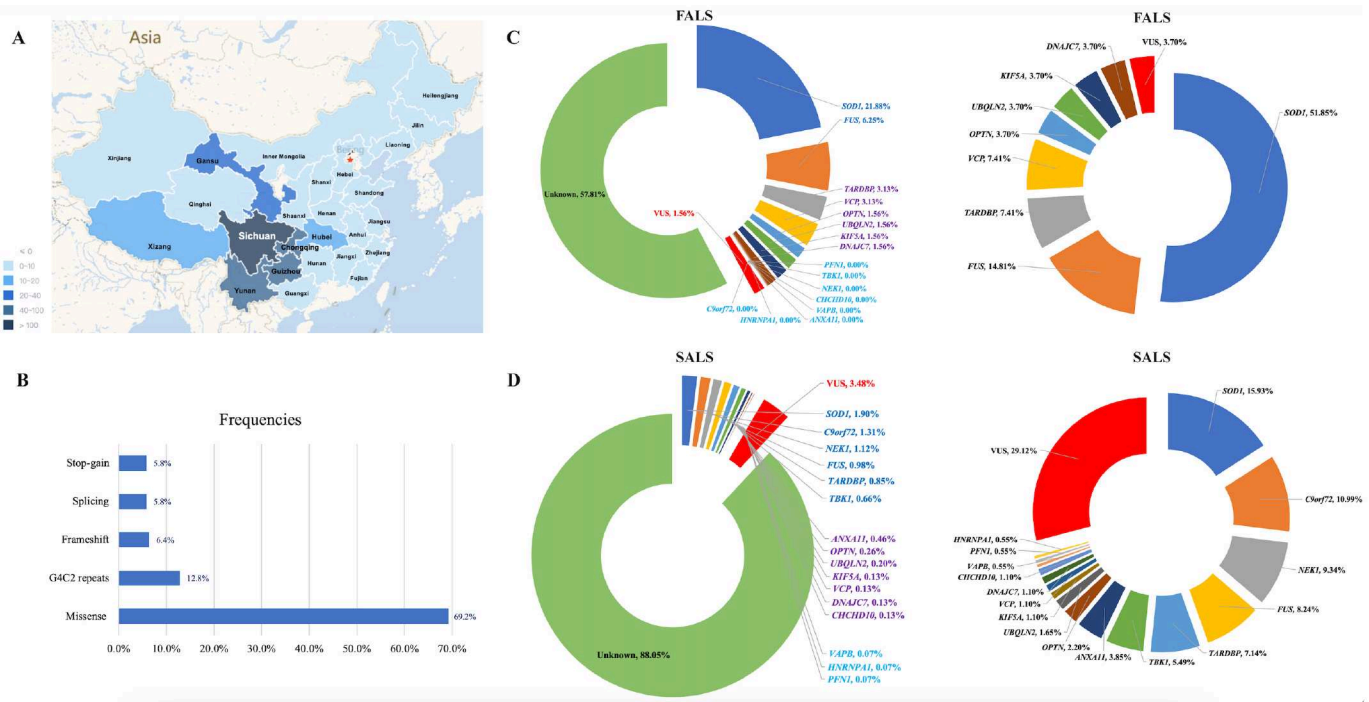


Figure 2 Regional distribution and genetic characteristics of patients with ALS in the study. (A) Distribution of patients with ALS in the study. Most of them came from Southwest China. (B) Type and proportion of rare variants identified in the study. (C) Mutation frequencies of each ALS causative gene in FALS and proportion of rare variants of each ALS causative gene in all the identified rare variants in FALS. (D) Mutation frequencies of each ALS causative gene in SALS and proportion of rare variants of each ALS causative gene in all the identified rare variants in SALS. ALS, amyotrophic lateral sclerosis; FALS, familial ALS; SALS, sporadic ALS; VUS, variants of uncertain significance.

Statistical analysis

Comparison of continuous data was made using Student's t-test. χ^2 tests were used to compare categorical variables between the two groups. Kaplan-Meier curves were performed to graphically compare survival between subgroups. A two-tailed $p < 0.05$ was considered statistically significant. Statistical analysis was performed using SPSS V25.0. A Bonferroni correction for multiple comparisons was performed if necessary.

RESULTS

Patient demographics and data set overview

Overall, 1587 patients with ALS, including 64 (4.0%) patients with FALS, were included in the study. Most patients (81.5%) came from Sichuan Province (in South West China; [figure 2A](#) and online supplemental table S2) and 96.4% of them were Han Chinese (online supplemental table S3). In our cohort, the mean age of onset was 53.9 ± 11.7 years and the peak age of onset was 40–70 years, which accounts for up to 80% of all patients. At the time of analysis, 982 patients (61.9%) died; the median survival time from symptom onset to death was 40.9 years (95% CI 38.7 to 43.1) ([table 1](#)).

Genetic characteristics

Rare variants of causative genes in ALS

A total of 95 P/LP variants in ALS causative genes were identified in 155 patients, including 26 (40.6%) with FALS and 129 (8.6%) with SALS; the most frequent was missense ([figure 2B–D](#), online supplemental table S4). Interestingly, none of one in the 155 patients carried two or more P/LP variants in the GI genes. The most frequent causative gene in FALS was *SOD1* (21.9%), followed by *FUS* (6.3%), *TARDBP* (3.1%) and *VCP* (3.1%). In SALS, mutations in *SOD1* were the

most frequent (1.9%), followed by *C9orf72* (1.31%), *NEK1* (1.12%), *FUS* (0.98%), *TARDBP* (0.85%) and *TBK1* (0.66%). In addition, variants defined as VUS were found in 1.6% of FALS and 3.5% of SALS, respectively ([figure 2C,D](#), online supplemental table S14).

Burden analysis

Although a large number of genetic studies for ALS have been performed in patients of European ancestry, we know relatively little regarding the genetics of ALS in Chinese, especially for the GII genes. To determine whether rare variants in a single gene were enriched in ALS cases (ALS-associated) or deleted in ALS cases (ALS-protective), we evaluated the distribution of rare variants, damaging (P/LP and deleterious)

Table 1 Demographic features of patients with amyotrophic lateral sclerosis in the study

| Variables | Total |
|---|--------------------------|
| n | 1587 |
| Sex ratio (male/female) | 1.4 (922/665) |
| Sporadic/familial | 1523/64 |
| Definite/probable | 1094/493 |
| Mean age at onset (years), mean \pm SD | 53.9 \pm 11.7 |
| Age at onset (<20/21–30/31–40/41–50/51–60/61–70/>70) | 4/32/170/392/435/435/119 |
| Mean disease duration at registration (months), mean \pm SD | 16.4 \pm 12.5 |
| Site of onset (spinal/bulbar) | 1237/350 |
| Survival status (alive/died/lost to follow-up) | 479/982/126 |
| Median survival time (95% CI) | 40.9 (38.7 to 43.1) |

Table 2 Burden analysis of rare variants (<0.0001) in ALS-associated genes among 1587 patients with ALS and 1866 inhouse controls

| Genes | Rare variants* | P value | Damaging* | P value | Non-damaging* | P value |
|---------------------------|----------------|-----------|-----------|-----------|---------------|-----------|
| Causative genes | | | | | | |
| <i>SOD1</i> | 44, 2 | $<1.0E-7$ | 43, 1 | $<1.0E-7$ | 1, 1 | 0.51 |
| <i>FUS</i> | 32, 13 | $<1.0E-7$ | 19, 3 | $<1.0E-6$ | 13, 10 | 0.286 |
| <i>VAPB</i> | 5, 6 | 0.99 | 1, 0 | – | 4, 6 | 0.52 |
| <i>TARDBP</i> | 19, 2 | $<1.0E-7$ | 15, 2 | $<1.0E-7$ | 4, 0 | $<1.0E-7$ |
| <i>OPTN</i> | 11, 8 | 0.318 | 6, 0 | $<1.0E-7$ | 5, 8 | 0.76 |
| <i>VCP</i> | 5, 2 | 0.114 | 4, 1 | 0.076 | 1, 1 | 0.51 |
| <i>UBQLN2</i> | 7, 6 | 0.442 | 5, 0 | $<1.0E-7$ | 2, 4 | 0.414 |
| <i>PFN1</i> | 2, 2 | 0.826 | 1, 1 | 0.51 | 1, 1 | 0.51 |
| <i>HNRNPA1</i> | 2, 1 | 0.288 | 1, 0 | – | 1, 1 | 0.51 |
| <i>CHCHD10</i> | 4, 4 | 0.966 | 2, 1 | 0.288 | 2, 3 | 0.702 |
| <i>TBK1</i> | 13, 7 | 0.06 | 10, 3 | 0.008 | 3, 4 | 0.850 |
| <i>NEK1</i> | 34, 27 | 0.112 | 17, 6 | 0.002 | 16, 20 | 0.732 |
| <i>ANXA11</i> | 15, 20 | 0.736 | 7, 3 | 0.202 | 5, 14 | 0.082 |
| <i>KIF5A</i> | 7, 8 | 0.802 | 3, 2 | 0.568 | 4, 6 | 0.52 |
| <i>DNAJC7</i> | 9, 6 | 0.282 | 3, 1 | 0.146 | 6, 4 | 0.454 |
| Risk or susceptible genes | | | | | | |
| <i>ALS2</i> | 25, 35 | 0.408 | 15, 19 | 0.834 | 10, 16 | 0.512 |
| <i>SETX</i> | 41, 39 | 0.348 | 21, 17 | 0.178 | 20, 22 | 0.098 |
| <i>ANG</i> | 2, 7 | 0.104 | 1, 3 | 0.342 | 1, 4 | 0.178 |
| <i>FIG4</i> | 17, 9 | 0.026 | 9, 5 | 0.088 | 8, 4 | 0.16 |
| <i>SIGMAR1</i> | 3, 1 | 0.146 | 1, 0 | – | 2, 1 | 0.288 |
| <i>CHMP2B</i> | 4, 2 | 0.376 | 4, 1 | 0.076 | 0, 1 | – |
| <i>SQSTM1</i> | 10, 8 | 0.360 | 6, 4 | 0.454 | 4, 4 | 0.966 |
| <i>DAO</i> | 9, 12 | 0.642 | 8, 5 | 0.242 | 1, 7 | 0.024 |
| <i>DCTN1</i> | 7, 21 | 0.022 | 2, 9 | 0.032 | 5, 12 | 0.194 |
| <i>MATR3</i> | 4, 8 | 0.256 | 2, 3 | 0.702 | 2, 5 | 0.36 |
| <i>TUBA4A</i> | 2, 5 | 0.36 | 1, 5 | 0.09 | 1, 0 | – |
| <i>CCNF</i> | 20, 12 | 0.062 | 9, 5 | 0.088 | 11, 7 | 0.188 |
| <i>TIA1</i> | 5, 6 | 0.990 | 1, 2 | 0.654 | 4, 4 | 0.966 |
| <i>GLT8D1</i> | 7, 4 | 0.298 | 3, 2 | 0.568 | 4, 2 | 0.376 |
| <i>CYLD</i> | 5, 7 | 0.796 | 1, 4 | 0.178 | 4, 3 | 0.528 |
| <i>SPG11</i> | 2, 35 | $<1.0E-7$ | 2, 16 | $<1.0E-7$ | 0, 19 | $<1.0E-7$ |
| <i>NEFH</i> | 19, 28 | 0.362 | 12, 20 | 0.288 | 11, 8 | 0.318 |
| <i>PRPH</i> | 9, 6 | 0.282 | 8, 3 | 0.07 | 1, 3 | 0.342 |
| <i>PNPLA6</i> | 10, 16 | 0.512 | 3, 4 | 0.85 | 7, 12 | 0.330 |
| <i>ELP3</i> | 7, 11 | 0.446 | 5, 5 | 0.782 | 2, 6 | 0.140 |
| <i>EWSR1</i> | 8, 4 | 0.16 | 3, 3 | 0.762 | 5, 1 | 0.048 |
| <i>ERBB4</i> | 9, 12 | 0.642 | 5, 6 | 0.99 | 4, 6 | 0.52 |
| <i>MAPT</i> | 3, 11 | 0.098 | 2, 3 | 0.702 | 1, 8 | 0.010 |
| <i>GRN</i> | 17, 12 | 0.118 | 7, 3 | 0.202 | 10, 9 | 0.544 |

The p values displayed are from the sequencing kernel association test.

*Represent the number of rare variants, damaging variants and non-damaging variants in 1587 patients with ALS and 1866 inhouse controls. Damaging variants were defined as P/LP variants in the group I genes according to the American College of Medical Genetics and as deleterious variants in the group II genes, all of which are shown in online supplemental table S14 and online supplemental table S15.

ALS, amyotrophic lateral sclerosis; MAF, minor allele frequency; P/LP, pathogenic/likely pathogenic.

and non-damaging (VUS and non-deleterious) variants in the ALS cohort and controls from inhouse controls by SKAT (online supplemental table S6). In the causative genes, we found rare P/LP variants in *SOD1*, *FUS*, *TARDBP*, *OPTN* and *UBQLN2* passed the exome-wide significance ($p < 2.5E-6$) (table 2). Interestingly, rare P/LP variants in two genes, *TBK1* and *NEK1*, identified as ALS causative genes by whole-exome analyses and gene burden analyses,^{12 13} were also enriched in ALS from our cohort, and the p value approached significance ($p = 0.008$ and $p = 0.002$, respectively). In the GII genes, rare damaging variants in *SPG11* were significantly fewer in ALS than in controls ($p < 1.0E-7$), which might be explained in

part by the observation that rare damaging variants in *SPG11* contribute to the development of the recessive form of ALS.¹⁴ However, rare variants in other GII genes were not enriched in ALS cases by gene-level burden analyses. Detailed information of rare variants identified in patients and inhouse controls is shown in online supplemental tables S14, S15.

In order to explore which rare P/LP variants in the GI genes might contribute to the risk of ALS, the distribution of minor allele frequencies of rare P/LP variants in the GI genes between patients and controls was compared by standard Fisher's exact test by two-stage analysis. In the initial stage, rare P/LP variants in each gene from 1587 cases and 1866 inhouse

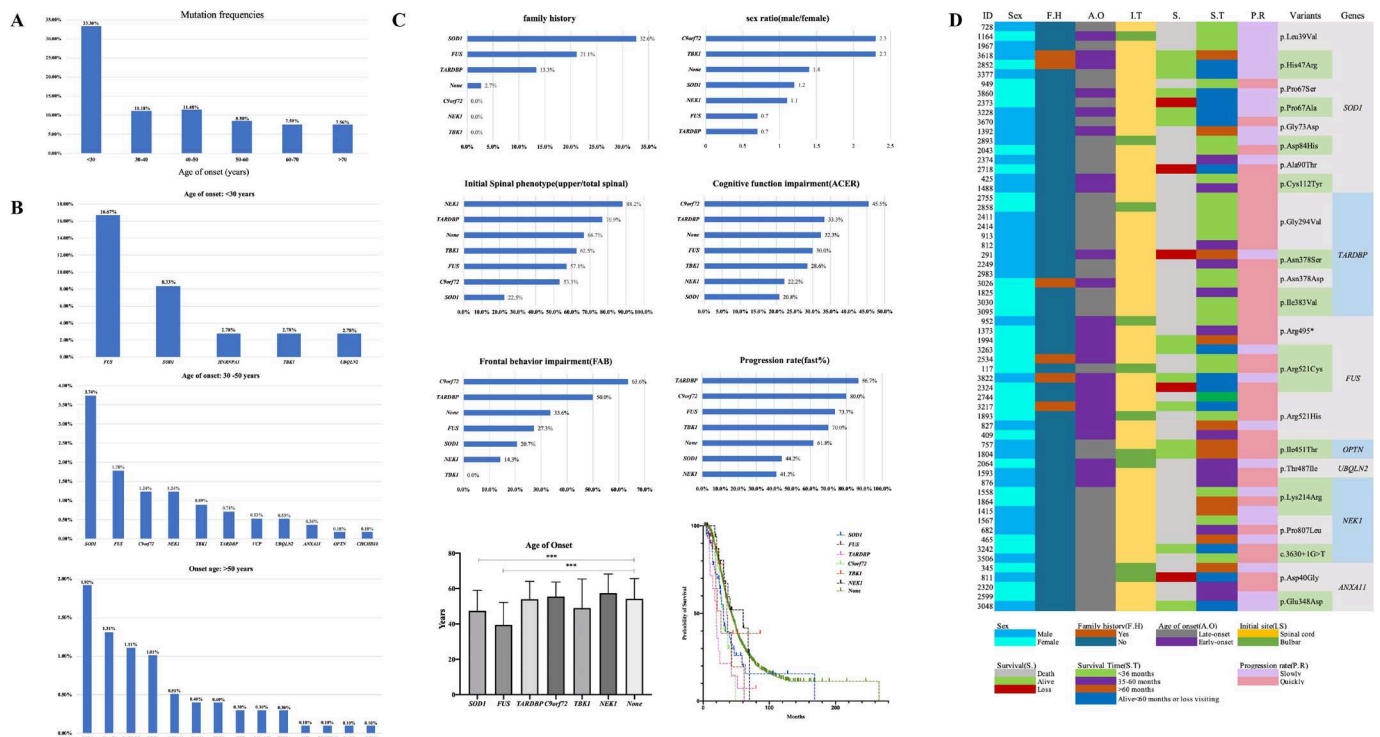


Figure 3 Mutation spectrum according to age of onset in patients with ALS and the genotype and phenotype correlation in ALS causative genes. (A) Mutation frequencies of patients in different groups of age of onset. (B) Ranking of frequencies of rare P/LP variants in ALS causative genes in patients whose age of onset was less than 30 years ($n=36$, total patients; $n=12$, patients with P/LP variants), more than 30 years but less than 50 years ($n=562$, total patients; $n=64$, patients with P/LP variants), and more than 50 years ($n=989$, total patients; $n=79$, patients with P/LP variants). (C) Genotype and phenotype correlation of six most frequent mutated genes, including *SOD1* ($n=43$), *FUS* ($n=19$), *TARDBP* ($n=15$), *C9orf72* ($n=20$), *TBK1* ($n=10$) and *NEK1* ($n=17$). None means patients without rare variants of the GI genes ($n=1376$). The phenotype, including family history, sex ratio, initial spinal symptoms, cognitive functional impairment, frontal behaviour impairment, progression rate, age of onset and median survival time were analysed. For age of onset, it was 47.4 ± 11.6 years in patients with *SOD1* variants, 39.5 ± 12.7 years in patients with *FUS* variants, 54.0 ± 10.0 years in patients with *TARDBP* variants, 55.5 ± 8.2 years in patients with *C9orf72* G4C2 repeats, 49.0 ± 16.5 years in patients with *TBK1* variants, 57.5 ± 10.8 years in patients with *NEK1* variants and 54.2 ± 11.4 years in patients without rare variants of the GI genes. Significant differences were found between patients with *FUS* variants and without rare variants of the GI genes ($p=3.0E-8$) and between patients with *SOD1* variants and without rare variants of the GI genes ($p=0.0001$). For median survival time, it was 30.5 (95% CI 25.1 to 35.9) months in patients with *SOD1* variants, 35.8 (95% CI 31.5 to 40.0) months in patients with *FUS* variants, 20.0 (95% CI 15.2 to 24.9) months in patients with *TARDBP* variants, 30.9 (95% CI 25.4 to 36.5) months in patients with *C9orf72* G4C2 repeats, 26.9 (95% CI 16.8 to 37.0) months in patients with *TBK1* variants, 60.5 (95% CI 25.0 to 95.9) months in patients with *NEK1* variants and 42.6 (95% CI 40.0 to 45.3) months in patients without rare variants of the GI genes. Significant differences were found between patients with *TARDBP* variants and without rare variants of the GI genes ($p=6.0E-5$) and between patients with *C9orf72* G4C2 repeats and without rare variants of the GI genes ($p=0.012$) (** $p<0.001$). (D) Clinical characteristics of rare special P/LP variants in ALS causative genes identified in more than one patient. ACER, Addenbrooke's Cognitive Examination-Revised; ALS, amyotrophic lateral sclerosis; FAB, Frontal Assessment Battery; GI, group I; P/LP, pathogenic/likely pathogenic.

controls were analysed; only G4C2 repeats in *C9orf72* and *TARDBP* p.Gly294Val passed significant difference (online supplemental table S5). In the second stage, 1587 cases and controls from GnomAD-EAS ($n=9977$) were included; two additional pathogenicity variants, *FUS* p.Arg521Cys and *FUS* p.Arg521His, also exceeded significance (online supplemental table S5).

Genotype-phenotype analysis

General features of patients with rare P/LP variants in ALS causative genes

Among the 155 patients carrying rare P/LP variants, 33.3% (12 of 36) of patients aged <30 years carried P/LP variant, which was much higher than that of patients aged >30 years (figure 3A). According to mutation frequencies of patients from different groups of age of onset, the mutation spectrum of three groups of age of onset, <30 years, 30–50 years and >50 years, was analysed. Variants in *FUS* were

the most frequent in the group of patients aged <30 years (16.7%), while it was *SOD1* in the groups of patients aged 30–50 years and >50 years (3.7% and 1.9%, respectively) (figure 3B).

Genotype-phenotype correlation of patients with P/LP variants in ALS causative genes

A total of 155 patients carried rare P/LP variants of 16 causative genes; the genotype-phenotype correlation is presented in detail in online supplemental table S6. Among them, more than 10 patients with rare P/LP variants were identified in *SOD1*, *C9orf72*, *FUS*, *NEK1*, *TARDBP* and *TBK1*, respectively, all of which were responsible for 7.8% (124 of 1587) of all patients and 80% (124 of 155) of patients carrying P/LP variants of ALS causative genes. Thus, the phenotype of these six genes was analysed further (figure 3C).

Most patients with *SOD1* P/LP variants had a positive family history, indicating strong penetrance of mutations

in *SOD1*. There were more male in patients with *C9orf72* and *TBK1* variants, but more female in patients with *FUS* and *TARDBP* variants. *FUS* variants presented with an early age of onset (compared with patients without rare variants of the GI genes, $p=3.0E-8$; figure 3C). Except for *SOD1*, weakness or muscular atrophy of the upper limb was usually first involved in patients carrying the other five causative gene variants. Cognitive and frontal behaviour impairments were usually seen in patients carrying the *C9orf72* and/or *TARDBP* variants, but relatively less in *SOD1*, *NEK1* or *TBK1*. Patients carrying *TARDBP*, *C9orf72* and *FUS* variants presented a rapid progression, but those carrying *NEK1* variants showed a slow progression. The much shorter median survival time in patients carrying *TARDBP* and *C9orf72* variants was usually less than 36 months, but that of patients carrying *NEK1* variants was more than 60 months.

Genotype-phenotype correlation among patients with variants from varying degrees of genetic evidence

In the current study, 155 patients had rare P/LP variant of GI, 100 patients with rare deleterious variant of GII and

1276 patients without rare variants of GI and GII (56 patients with variants of *VUS* in GI were not analysed). Compared with patients without P/LP variants of GI and deleterious variants of GII, much higher proportion of limb onset as the initial symptom (85% vs 78%, $p=0.042$), much younger age of onset (50.4 years vs 54.1 years, $p<0.001$) and much shorter median survival time (34.0 months vs 42.6 months, $p=0.011$) in patients with P/LP variants of GI (figure 4A–C), and much higher proportion of bulbar onset as the initial symptom (32% vs 22%, $p=0.020$), were observed in patients with damaging variants of GII; however, there were no differences in the duration of diagnostic delay, ALSFRS-R at baseline and disease progression rate among these three groups (online supplemental figure S1A–C). In addition, no differences were found in cognitive function impairment and frontal behaviour impairment between patients with rare P/LP variants of GI and patients without P/LP variants of GI (online supplemental table S6). The genotype-phenotype correlation of patients with rare damaging variant of GII is described in detail in online supplemental table S7.

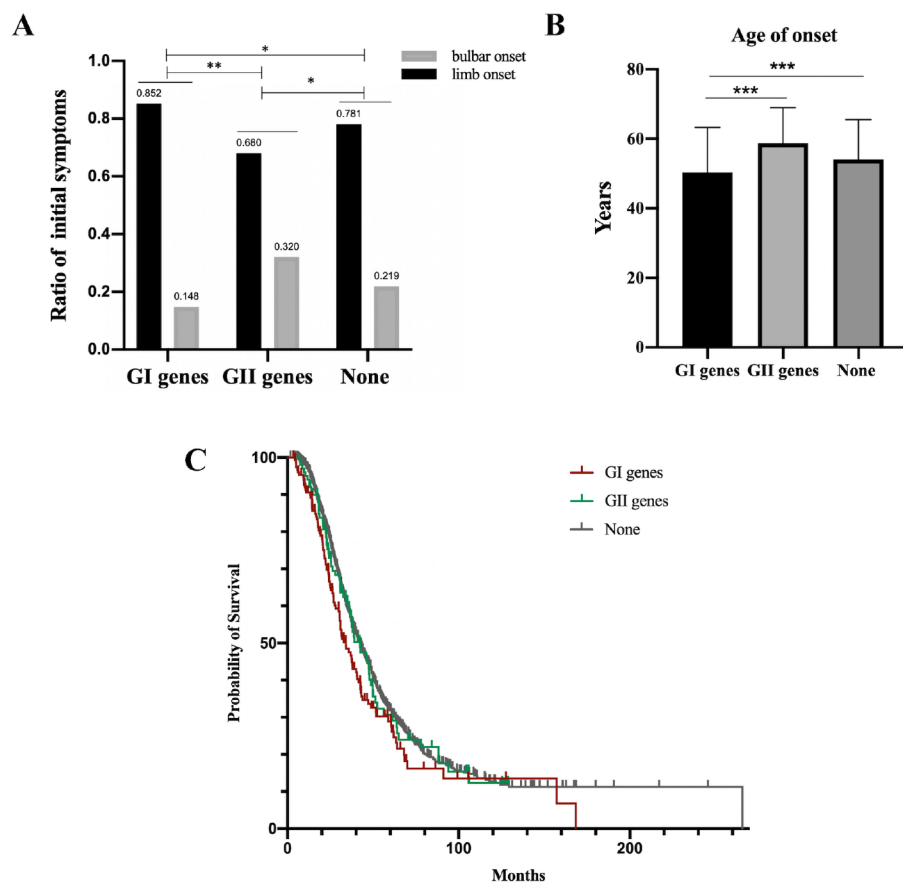


Figure 4 Comparison of initial symptoms, age of onset and median survival time among patients with rare P/LP variants in the GI genes (n=155), rare deleterious variants in the GII genes (n=100) and without rare damaging variants in the GI and GII genes (n=1276). (A) Ratio of patients presenting limb onset or bulbar onset (* $p<0.05$, ** $p<0.01$). (B) The mean age of onset was 50.4±12.9 years in patients with rare P/LP variants in the GI genes, 55.8±12.0 years in patients with rare deleterious variants in the GII genes and 54.1±11.4 years in patients without rare damaging variants in the GI and GII genes. The mean age of onset in patients with rare P/LP variants in the GI genes was younger than that in patients with rare deleterious variants in the GII genes (** $p<0.001$) and in patients without rare damaging variants in the GI and GII genes (** $p<0.001$). (C) The median survival time was 34.0 (95% CI 28.4 to 39.6) months in patients with rare P/LP variants in the GI genes, 42.3 (95% CI 33.5 to 51.1) months in patients with rare deleterious variants in the GII genes and 42.6 (95% CI 39.9 to 45.3) months in patients without rare damaging variants in the GI and GII genes. Significant difference was found between patients with rare P/LP variants in the GI genes and without rare damaging variants in the GI and GII genes ($p=0.011$). GI, group I; GII, group II; P/LP, pathogenic/likely pathogenic.

Genotype-phenotype correlation and haplotype analysis for special pathogenic variants of ALS causative genes identified in more than one patient

Twenty-two rare P/LP variants in seven GI genes were identified in more than one patient. The detailed features of the patients are shown in figure 3D. Patients carrying *SOD1* p.Cys112Tyr, *TARDBP* p.Gly294Val, *TARDBP* p.Asn378Asp, *TARDBP* p.Ile383Val, *FUS* p.Arg495* and *FUS* p.Arg521His presented a rapid progression and/or short survival duration, but patients carrying *SOD1* p.His47Arg, *SOD1* p.Pro67Ala and *ANAX11* p.Glu348Asp presented a slow progression and longer survival duration. Haplotype analysis for special pathogenic variants identified in more than two patients revealed that the patients with the same variants shared the same haplotypes (online supplemental tables S8–S12), suggesting that these variants might be derived from founder events. However, most of the probands denied family history of ALS or mimic ALS, suggesting reduced penetrance of these mutants.

Significantly, p. Gly294Val of *TARDBP*, as the most common mutation in our cohort, was found in six unrelated patients who presented late onset, faster progression and shorter survival duration (<36 months from onset) (figure 3D). Interestingly, until now, this variant has only been reported in eight Caucasian patients with ALS, especially of Italian origin,¹⁵ but not found in Chinese.¹⁶ Haplotype analysis for five of them with this variant suggested they shared a haplotype interval of 397.5 kb, suggesting a common ancestral origin. Further functional experiments from immunocytochemistry (online supplemental figure S2A) and flow cytometry analysis (online supplemental figure S2B) supported that p. Gly294Val of *TARDBP* was pathogenic.

More than one rare variant of GI and GII genes: evidence of oligogenic inheritance

Cumulated studies proposed the possibility that multiple interacting genetic variants might enhance the risk of developing the disease or modify the disease phenotypes in neurodegenerative diseases.¹⁷ Interestingly, a total of 50 patients with more than one rare variant of GI and GII genes were identified (online supplemental table S13). Among them, 5 patients (7.8% in FALS) reported a family history of ALS, but 45 patients (3.0% in SALS) were sporadic. Although the age of onset in patients with more than one variant in the GI genes tends to be much younger than in patients with only one rare P/LP variants in the GI genes (48.9 ± 14.3 years vs 50.8 ± 12.6 years), no significance in age of onset, progression rate and median survival time was found between patients with more than one variant in the GI genes and only one rare P/LP variants in the GI genes (online supplemental figure S2).

DISCUSSION

In the current study, we determined the genetic spectrum of 41 ALS-related genes and the genotype-phenotype correlation based on a large Chinese ALS cohort. Furthermore, for the first time, we systematically analysed the collective risk of rare P/LP or deleterious variants in these genes, which led to a better understanding of their pathogenicity in ALS.

To date, several genetic studies have comprehensively analysed the mutation spectrum of ALS using next generation sequencing (NGS) methods in European patients,^{5 18–21} providing important information for developing guidelines for genetic testing for ALS in clinical practice. In Asia, especially in China, which contributes a fifth of the world's population, only two NGS studies

on a limited sample size of patients with ALS^{16 22} have been performed to analyse the mutation spectrum of ALS-associated genes (45 and 268 patients with ALS involved, respectively). The small-sized studies prevented the clarification of genetic spectrum and the genotype-phenotype correlation. In addition, the clinical features of the consecutive patients involved in this study, including the proportion of FALS, sex ratio, initial symptoms, mean age of onset and median survival time, were consistent with other studies from Chinese population,^{22 23} although some of which were slightly different from patients from Caucasian populations (eg, the proportion of patients with FALS was 1.2%–2.7% in Chinese²³ (4.0% in our cohort), but 5%–10% in Caucasians²; and the mean age of onset was 54.4 years old in a larger Chinese ALS cohort²⁴ (53.9 years old in our cohort), but 62.1–66.3 years old in Caucasians²⁵). Therefore, it was reasonable that the ALS cohort involved in this study could be a typical representative of the Chinese ALS population, and these differences of clinical features between Chinese and Caucasian patients indicated it is necessary to unearth the genetic features from other ethnicities.

In the present study, we comprehensively analysed the mutation spectrum of known causative and risk or needing to be confirmed ALS genes in Chinese patients with ALS, which were classified into two categories (GI and GII). We found the mutation frequencies of the 16 GI genes were as high as 40.6% and 8.6% in FALS and SALS, respectively, which were consistent with those reviewed in previous studies.^{23 26} According to our comprehensive analysis, we suggest a genetic screening strategy in Chinese patients with ALS: in FALS, the following genes should at least be analysed, *SOD1* (21.9%), *FUS* (6.3%) *TARDBP* (3.1%) and *VCP* (3.1%), which account for 34.4% of patients, and in SALS, *SOD1* (1.90%), *C9orf72* (1.31%), *NEK1* (1.12%), *FUS* (0.98%), *TARDBP* (0.85%) and *TBK1* (0.66%), which account for about 6.8% of patients. Compared with mutation frequencies in patients with ALS of European ancestry,²⁷ *SOD1* is the most common causative gene in Chinese patients with FALS and SALS.²⁶ Surprisingly, G4C2 repeat expansion in *C9orf72* is the second common causative gene for SALS in our cohort, which was substantially higher than that in other Chinese cohorts (1.31% vs 0%–0.3%).^{28 29} However, no patients with *C9orf72* G4C2 repeats had reported family history of ALS in this study, but up to 40% of *C9orf72* positive FALS from Europe and the USA were identified,³⁰ which might be partly accounted by deficient awareness of ALS in Chinese populations in the last few decades and the age-dependent penetrance of *C9orf72* G4C2 repeats.³⁰ The mutation carriers of *C9orf72* G4C2 repeats from our cohort were suggested to share a common founder of European ancestry,³¹ indicating that it is an ideal candidate cohort for prospective studies investigating the role of *C9orf72* in the Chinese population due to its age-dependent penetrance,³⁰ and the upcoming targeted therapies for *C9orf72* repeat will also benefit a subset of Chinese patients with ALS. In addition, more than 33% of patients whose age of onset was <30 years carried P/LP variants, whereas the mutation frequencies (about 11% or 8%) presented plummeting in patients whose age of onset was >30 years, which supported the hypothesis that the number of multistep process of ALS (usually six-step process)²⁵ will be reduced in patients with ALS with genetic mutations compared with those without mutations.³² According to our findings, varied mutation frequency and spectrum among different groups of age of onset suggest that patients who are younger than 30 years should regularly undergo genetic testing to clarify the aetiology since high mutation frequencies especially for *FUS* were seen. Moreover, our finding also suggested that ageing and

environmental factors play a more important role than genetic factors in elderly patients with ALS. Therefore, these findings might contribute to drafting a genetic scanning strategy for Chinese patients with ALS.

Our study further clarifies the correlation between genotypes and phenotypes of ALS in the Chinese population. Generally, significantly earlier age of onset, faster progression and shorter median survival time were found in patients carrying P/LP variants than in patients without P/LP variants, which was consistent with other studies and suggests that causative genetic variants are a poor predictor of outcome of ALS.^{1,31} However, we did not find much more proportion of patients beginning with bulbar onset in patients with the *GI* gene variants compared with patients without *GI/GII* variants because the former were generally considered a more 'severe' phenotype. Nearly half of patients with variants of the three genes (75 patients out of 155 patients with the *GI* gene variants), namely *SOD1*, *TARDBP* and *NEK1*, variants which will always be linked with spinal onset (as shown in our study; online supplemental table S6), might contribute to the current finding. Although phenotypic pleiotropy of ALS genes was suggested, genotype-phenotype correlation analyses further determined the main clinical manifestations of each gene. As such, patients with *SOD1* variants tend to first involve lower limb. Mutations in *FUS* and *TARDBP* were associated with an earlier age of onset, faster progression and shorter survival, but a reverse relationship was found in patients with variants of *NEK1* and *ANXA11*. Most patients with P/LP variants of *C9orf72* likely presented with cognitive and frontal behaviour impairments, but relatively less in *SOD1*. Importantly, more clear and sharing phenotypes of each P/LP variant were characterised in our study, such as p.Leu39Val, p.His47Arg and p.Pro67Ala in *SOD1*, which were associated with slower progression, and p.Cys112Tyr in *SOD1*, p.Gly294Val in *TARDBP* and p.Arg521His in *FUS*, which were associated with faster progression. Because all of the patients came from different families and most shared variants were suggested to come from a founder effect based on our haplotype analysis, our results suggest that these causative genetic variants strongly modify disease phenotypes.

Our study further supports the findings that the most common variants in Caucasians, p.Ala4Val of *SOD1* and p.Arg521Cys of *FUS*, are associated with faster progression,^{33,34} although the former was found in only one late-onset patient whose survival duration was about 14 months. However, the most common variants of *TARDBP*, p.Ala382Thr, reported in Caucasian patients with ALS,³⁵ and p.Met337Val, reported in Chinese from Eastern China,¹⁶ were not found in our cohort. Another variant, p.Gly294Val, of *TARDBP* was first reported in Chinese and was the most common variant in our cohort. Its pathogenicity was previously suggested by experimental evidence from patient-derived induced pluripotent stem cells³⁶ and is supported by our functional experiments (online supplemental figure S3). Our haplotype analysis was also consistent with a common ancestral origin reported in five Italian and Moroccan patients with ALS sharing a haplotype interval of 1.4 Mb.¹⁵ However, whether patients with this variant identified in our cohorts and Caucasians came from a founder effect was unknown due to differences in polymorphisms used for haplotype analysis. In any case, our results suggested it is necessary to explore the genetics of patients with ALS from different ethnicities, even from different regions in the same ethnicity, although some patients might share a few P/LP variants.

Since 2014, 12 new ALS causative/risk genes have been discovered (shown in online supplemental table S1), namely *CHCHD10*, *TBK1*, *NEK1*, *ANXA11*, *KIF5A*, *DNAJC7*, *MATR3*,

TUBA4A, *CCNF*, *TIA1*, *GLT8D1* and *CYLD*; only the former six genes were classified as ALS causative genes due to strong evidence (<https://alsod.ac.uk/>). The remaining 6 genes and other 19 ALS risk genes require replication or resolution of conflicting evidence or have not been well studied in Chinese population. However, we did not find significant enrichment of rare variants by burden analysis at the gene level, which did not support its pathogenicity in ALS. However, the results should be interpreted with caution. In our analysis, consensus definition for P/LP or damaging variants in patients with ALS and inhouse controls was performed; however, the pathogenicity predicted to be deleterious variants needs to be confirmed in future studies. In addition, aetiological heterogeneity, incomplete penetrance, late-onset diseases or limited sample size make it difficult to detect the associations between rare variants and the disease in case-control studies. As shown in the results, rare P/LP variants did not significantly enrich in each causative gene, except for *SOD1*, *FUS*, *TARDBP*, *OPTN* and *UBQLN2*.

The current study represents a comprehensive and systematic screening of ALS-associated genes in an unprecedented large cohort of patients with ALS from West China; however, it has some limitations. First, we focused on the mutation spectrum and conducted genotype-phenotype correlation analyses in the *GI* genes, but the pathogenicity of some *GII* genes in ALS still needs to be confirmed in future studies. Second, we only analysed the clinical and genetic architectures of patients with putative rare P/LP variants in the coding region of ALS-causative genes, but not of those with VUS. Although the pathogenicity of variants was determined according to the ACMG standard, their pathogenicity needs to be confirmed in more functional studies. Variants in non-coding regions, such as regulatory elements, which may play important roles in ALS, were not analysed in the current study.

CONCLUSION

We conducted the most systematic investigation of the clinical and genetic architectures in consecutive patients of a large ALS population from West China. The identified mutation spectrum of ALS is beneficial in drafting genetic scanning strategies, especially for patients with FALS and those with an age of onset younger than 30 years. The genotype-phenotype correlation analysis provided an approach for precision diagnosis, intervention and prognosis assessment.

Author affiliations

¹Department of Neurology, Laboratory of Neurodegenerative Disorders, Rare disease center, West China Hospital, Sichuan University, Chengdu, China

²Guangzhou KingMed Diagnostics Group Co., Ltd, Guangzhou, China

³Department of Geriatrics, The Fourth Affiliated Hospital of Sichuan University, Chengdu, China

⁴Department of Neurology, The Third Affiliated Hospital of Zunyi Medical University, Zunyi, China

⁵Department of Geriatrics, The First Affiliated Hospital of Chengdu Medical College, Chengdu, China

⁶Department of Neurology, Guizhou Provincial People's Hospital, Guiyang, China

⁷Department of Neurology, The Affiliated Hospital of Sichuan Nursing Vocational College, Chengdu, China

⁸Department of Neurology, Mianyang Central Hospital, Mianyang, China

⁹Department of Neurology, Neurological Diseases and Brain Function Laboratory, The Affiliated Hospital of Southwest Medical University, Luzhou, China

¹⁰Department of Neurodegenerative Disease, Hertie Institute for Clinical Brain Research, University of Tuebingen and DZNE, Tuebingen, Germany

¹¹Department of Neurology, Ningbo First Hospital & Ningbo Hospital of Zhejiang University, Ningbo, China

¹²Department of Neurology, The First Affiliated Hospital of Xi'an Jiaotong University, Xi'an, China

¹³Department of Neurology, General Hospital of Ningxia Medical University, Yinchuan, China

¹⁴Department of Neurology, The First Affiliated Hospital of Xiamen University, Xiamen, China

¹⁵Department of Neurology, The Affiliated Yancheng Hospital, School of Medicine, Southeast University, Nanjing, China

¹⁶Department of Neurology, The First People's Hospital of Yunnan Province, Kunming, China

Acknowledgements The authors appreciate all cohort individuals and their families for their participation in this study. The authors thank Professor Fen-Biao Gao, University of Massachusetts Medical School, for helpful discussions and comments.

Contributors Y-PC: design, execution, DNA extraction, patients' enrolment, data analysis, writing. SY: execution, DNA extraction, controls' enrolment, data analysis. Q-QW: execution, patients' enrolment, clinical data collection. BC: design, execution, patients' enrolment, clinical data collection, data analysis. XG: blood sample collection, DNA extraction, data analysis. WS, BZ, X-PC, YW, JY, MS: execution, patients' enrolment. MS, F-FL: execution, data analysis. YH, RO, LZ, KL, J-YL, X-RX, ZJ, JL, YX, KC, FF, Y-YC, S-RL, TH, X-QY, X-YG, HL, QH, NS: clinical data, blood sample collection. Y-FC, C-YL, J-PL, P-LP: data analysis. Q-QZ: DNA extraction. HS: conception, design, organisation, review and critique.

Funding This study was supported by the National Key Research and Development Program of China (grant no. 2016YFC0901504), the National Natural Science Fund of China (grant no. 81871000, 81701249 and 81971188), the Science and Technology Bureau Fund of Sichuan Province (no. 2019YFS0216), Program for Entrepreneurial and Innovative Leading Talents of Guangzhou, China (grant no. CXJTD-201603), Project of Academician Workstation at KingMed Diagnostics, Guangzhou, China (grant no. 2017B090904030), and the 1.3.5 Project for Disciplines of Excellence, West China Hospital, Sichuan University (grant no. 2019HXFH046 and ZYJC18038).

Map disclaimer The inclusion of any map (including the depiction of any boundaries therein), or of any geographic or locational reference, does not imply the expression of any opinion whatsoever on the part of BMJ concerning the legal status of any country, territory, jurisdiction or area or of its authorities. Any such expression remains solely that of the relevant source and is not endorsed by BMJ. Maps are provided without any warranty of any kind, either express or implied.

Competing interests None declared.

Patient consent for publication Obtained.

Ethics approval Approval was obtained from the Ethics Committee of West China Hospital of Sichuan University (approval number 2015-236). Informed consent was obtained from all subjects.

Provenance and peer review Not commissioned; externally peer reviewed.

Data availability statement All data relevant to the study are included in the article or uploaded as supplementary information.

Supplemental material This content has been supplied by the author(s). It has not been vetted by BMJ Publishing Group Limited (BMJ) and may not have been peer-reviewed. Any opinions or recommendations discussed are solely those of the author(s) and are not endorsed by BMJ. BMJ disclaims all liability and responsibility arising from any reliance placed on the content. Where the content includes any translated material, BMJ does not warrant the accuracy and reliability of the translations (including but not limited to local regulations, clinical guidelines, terminology, drug names and drug dosages), and is not responsible for any error and/or omissions arising from translation and adaptation or otherwise.

Open access This is an open access article distributed in accordance with the Creative Commons Attribution Non Commercial (CC BY-NC 4.0) license, which permits others to distribute, remix, adapt, build upon this work non-commercially, and license their derivative works on different terms, provided the original work is properly cited, appropriate credit is given, any changes made indicated, and the use is non-commercial. See: <http://creativecommons.org/licenses/by-nc/4.0/>.

ORCID iD

Hui-Fang Shang <http://orcid.org/0000-0003-0947-1151>

REFERENCES

- Brown RH, Al-Chalabi A. Amyotrophic lateral sclerosis. *N Engl J Med* 2017;377:162–72.
- Zarei S, Carr K, Reiley L, Diaz K, Guerra O, Altamirano PF, Pagani W, Lodin D, Orozco G, Chinea A. A comprehensive review of amyotrophic lateral sclerosis. *Surg Neurol Int* 2015;6:171.
- Mejzini R, Flynn LL, Pitout IL, Fletcher S, Wilton SD, Akkari PA. Als genetics, mechanisms, and therapeutics: where are we now? *Front Neurosci* 2019;13:1310.
- Brooks BR, Miller RG, Swash M, Munsat TL. World federation of neurology research group on motor neuron D. El Escorial revisited: revised criteria for the diagnosis of amyotrophic lateral sclerosis. *Amyotroph Lateral Scler Other Motor Neuron Disord* 2000;1:293–9.
- Kenna KP, McLaughlin RL, Byrne S, Elamin M, Heverin M, Kenny EM, Cormican P, Morris DW, Donaghy CG, Bradley DG, Hardiman O. Delineating the genetic heterogeneity of ALS using targeted high-throughput sequencing. *J Med Genet* 2013;50:776–83.
- Kimura F, Fujimura C, Ishida S, Nakajima H, Furutama D, Uehara H, Shinoda K, Sugino M, Hanafusa T. Progression rate of ALSFRS-R at time of diagnosis predicts survival time in ALS. *Neurology* 2006;66:265–7.
- Wei Q, Chen X, Zheng Z, Huang R, Guo X, Cao B, Bak TH, Shang H. Screening for cognitive impairment in a Chinese ALS population. *Amyotroph Lateral Scler Frontotemporal Degener* 2015;16:40–5.
- Wei Q, Chen X, Zheng Z, Huang R, Guo X, Cao B, Zhao B, Shang H-F. Frontal lobe function and behavioral changes in amyotrophic lateral sclerosis: a study from southwest China. *J Neurol* 2014;261:2393–400.
- Chen Y, Lin Z, Chen X, Cao B, Wei Q, Ou R, Zhao B, Song W, Wu Y, Shang H-F. Large C9orf72 repeat expansions are seen in Chinese patients with sporadic amyotrophic lateral sclerosis. *Neurobiol Aging* 2016;38:217.
- Chen Y, Gu X, Ou R, Zhang L, Hou Y, Liu K, Cao B, Wei Q, Li C, Song W, Zhao B, Wu Y, Cheng J, Shang H. Evaluating the role of SNCA, LRRK2, and GBA in Chinese patients with early-onset parkinson's disease. *Mov Disord* 2020;35:2046–55.
- Richards S, Aziz N, Bale S, Bick D, Das S, Gastier-Foster J, Grody WW, Hegde M, Lyon E, Spector E, Voelkerding K, Rehml HL, Committee A, ACMG Laboratory Quality Assurance Committee. Standards and guidelines for the interpretation of sequence variants: a joint consensus recommendation of the American college of medical genetics and genomics and the association for molecular pathology. *Genet Med* 2015;17:405–23.
- Cirulli ET, Lasseigne BN, Petrovski S, Sapp PC, Dion PA, Leblond CS, Couthouis J, Lu Y-F, Wang Q, Krueger BJ, Ren Z, Keebler J, Han Y, Levy SE, Boone BE, Wimbish JR, Waite LL, Jones AL, Carulli JP, Day-Williams AG, Staropoli JF, Xin WW, Chesi A, Raphael AR, McKenna-Yasek D, Cady J, Vianney de Jong JMB, Kenna KP, Smith BN, Topp S, Miller J, Gkazi A, Al-Chalabi A, van den Berg LH, Veldink J, Silani V, Ticozzi N, Shaw CE, Baloh RH, Appel S, Simpson E, Lagier-Tourenne C, Pulst SM, Gibson S, Trojanowski JQ, Elman L, McCluskey L, Grossman M, Shneider NA, Chung WK, Ravits JM, Glass JD, Sims KB, Van Deerlin VM, Maniatis T, Hayes SD, Ordureau A, Swarup S, Landers J, Baas F, Allen AS, Bedlack RS, Harper JW, Gitler AD, Rouleau GA, Brown R, Harms MB, Cooper GM, Harris T, Myers RM, Goldstein DB, FALS Sequencing Consortium. Exome sequencing in amyotrophic lateral sclerosis identifies risk genes and pathways. *Science* 2015;347:1436–41.
- Kenna KP, van Doormaal PTC, Dekker AM, Ticozzi N, Kenna BJ, Diekstra FP, van Rheenen W, van Eijk KR, Jones AR, Keagle P, Shatunov A, Sproviero W, Smith BN, van Es MA, Topp SD, Kenna A, Miller JW, Fallini C, Tiloca C, McLaughlin RL, Vance C, Troakes C, Colombrita C, Mora G, Calvo A, Verde F, Al-Sarraj S, King A, Calini D, de Belleruche J, Baas F, van der Kooij AJ, de Visser M, Ten Asbroek ALMA, Sapp PC, McKenna-Yasek D, Polak M, Asress S, Muñoz-Blanco JL, Strom TM, Meitinger T, Morrison KE, Lauria G, Williams KL, Leigh PN, Nicholson GA, Blair IP, Leblond CS, Dion PA, Rouleau GA, Pall H, Shaw PJ, Turner MR, Talbot K, Taroni F, Boylan KB, Van Blitterswijk M, Rademakers R, Esteban-Pérez J, García-Redondo A, Van Damme P, Robberecht W, Chio A, Gellera C, Drepper C, Sendtner M, Ratti A, Glass JD, Mora JS, Basak NA, Hardiman O, Ludolph AC, Andersen PM, Weishaupt JH, Brown RH, Al-Chalabi A, Silani V, Shaw CE, van den Berg LH, Veldink JH, Landers JE, SLAGEN Consortium. NEK1 variants confer susceptibility to amyotrophic lateral sclerosis. *Nat Genet* 2016;48:1037–42.
- Daoud H, Zhou S, Noreau A, Sabbagh M, Belzil V, Dionne-Laporte A, Tranchant C, Dion P, Rouleau GA. Exome sequencing reveals SPG11 mutations causing juvenile ALS. *Neurobiol Aging* 2012;33:839.
- Corrado L, Pensato V, Croce R, Di Pierro A, Mellone S, Dalla Bella E, Salsano E, Paraboschi EM, Giordano M, Saraceno M, Mazzini L, Gellera C, D'Alfonso S. The first case of the TARDBP p.G294V mutation in a homozygous state: is a single pathogenic allele sufficient to cause ALS? *Amyotroph Lateral Scler Frontotemporal Degener* 2020;21:273–9.
- Liu Z-J, Lin H-X, Wei Q, Zhang Q-J, Chen C-X, Tao Q-Q, Liu G-L, Ni W, Gitler AD, Li H-F, Wu Z-Y. Genetic spectrum and variability in Chinese patients with amyotrophic lateral sclerosis. *Aging Dis* 2019;10:1199–206.
- McCann EP, Henden L, Fifita JA, Zhang KY, Grima N, Bauer DC, Chan Moi Fat S, Twine NA, Pamphlett R, Kiernan MC, Rowe DB, Williams KL, Blair IP. Evidence for polygenic and oligogenic basis of Australian sporadic amyotrophic lateral sclerosis. *J Med Genet* 2020. doi:10.1136/jmedgenet-2020-106866. [Epub ahead of print: 14 May 2020].
- Morgan S, Shatunov A, Sproviero W, Jones AR, Shoai M, Hughes D, Al Khleifat A, Malaspina A, Morrison KE, Shaw PJ, Shaw CE, Sidle K, Orrell RW, Fratta P, Hardy J, Pittman A, Al-Chalabi A. A comprehensive analysis of rare genetic variation in amyotrophic lateral sclerosis in the UK. *Brain* 2017;140:1611–8.
- Müller K, Brenner D, Weydt P, Meyer T, Grehl T, Petri S, Grosskreutz J, Schuster J, Volk AE, Borck G, Kubisch C, Klopstock T, Zeller D, Jablonka S, Sendtner M, Klebe S, Knehr A, Günther K, Weis J, Claeys KG, Schrank B, Sperfeld A-D, Hübers A, Otto M, Dorst J, Meitinger T, Strom TM, Andersen PM, Ludolph AC, Weishaupt JH, ALSnMNDNET G, German ALS network MND-NET. Comprehensive analysis of the mutation spectrum in 301 German ALS families. *J Neurol Neurosurg Psychiatry* 2018;89:817–27.

- 20 Couthouis J, Raphael AR, Daneshjou R, Gitler AD. Targeted exon capture and sequencing in sporadic amyotrophic lateral sclerosis. *PLoS Genet* 2014;10:e1004704.
- 21 McCann EP, Williams KL, Fifita JA, Tarr IS, O'Connor J, Rowe DB, Nicholson GA, Blair IP. The genotype-phenotype landscape of familial amyotrophic lateral sclerosis in Australia. *Clin Genet* 2017;92:259–66.
- 22 Chen W, Xie Y, Zheng M, Lin J, Huang P, Pei Z, Yao X. Clinical and genetic features of patients with amyotrophic lateral sclerosis in southern China. *Eur J Neurol* 2020;27:1017–22.
- 23 Liu X, He J, Gao F-B, Gitler AD, Fan D. The epidemiology and genetics of amyotrophic lateral sclerosis in China. *Brain Res* 2018;1693:121–6.
- 24 Xu L, Chen L, Wang S, Feng J, Liu L, Liu G, Wang J, Zhan S, Gao P, Fan D. Incidence and prevalence of amyotrophic lateral sclerosis in urban China: a national population-based study. *J Neurol Neurosurg Psychiatry* 2020;91:520–5.
- 25 Al-Chalabi A, Calvo A, Chio A, Colville S, Ellis CM, Hardiman O, Heverin M, Howard RS, Huisman MHB, Keren N, Leigh PN, Mazzini L, Mora G, Orrell RW, Rooney J, Scott KM, Scotton WJ, Seelen M, Shaw CE, Sidle KS, Swingle R, Tsuda M, Veldink JH, Visser AE, van den Berg LH, Pearce N. Analysis of amyotrophic lateral sclerosis as a multistep process: a population-based modelling study. *Lancet Neurol* 2014;13:1108–13.
- 26 Wei Q, Chen X, Chen Y, Ou R, Cao B, Hou Y, Zhang L, Shang H-F. Unique characteristics of the genetics epidemiology of amyotrophic lateral sclerosis in China. *Sci China Life Sci* 2019;62:517–25.
- 27 Renton AE, Chio A, Traynor BJ. State of play in amyotrophic lateral sclerosis genetics. *Nat Neurosci* 2014;17:17–23.
- 28 He J, Tang L, Benyamin B, Shah S, Hemani G, Liu R, Ye S, Liu X, Ma Y, Zhang H, Cremin K, Leo P, Wray NR, Visscher PM, Xu H, Brown MA, Bartlett PF, Mangelsdorf M, Fan D. C9orf72 hexanucleotide repeat expansions in Chinese sporadic amyotrophic lateral sclerosis. *Neurobiol Aging* 2015;36:2660.
- 29 Zou Z-Y, Li X-G, Liu M-S, Cui L-Y. Screening for C9orf72 repeat expansions in Chinese amyotrophic lateral sclerosis patients. *Neurobiol Aging* 2013;34:1710.
- 30 Majounie E, Renton AE, Mok K, Doppler EGP, Waite A, Rollinson S, Chio A, Restagno G, Nicolaou N, Simon-Sanchez J, van Swieten JC, Abramzon Y, Johnson JO, Sendtner M, Pamphlett R, Orrell RW, Mead S, Sidle KC, Houlden H, Rohrer JD, Morrison KE, Pall H, Talbot K, Ansorge O, Hernandez DG, Arepalli S, Sabatelli M, Mora G, Corbo M, Giannini F, Calvo A, Englund E, Borghero G, Floris GL, Remes AM, Laaksovirta H, McCluskey L, Trojanowski JQ, Van Deerlin VM, Schellenberg GD, Nalls MA, Drory VE, Lu C-S, Yeh T-H, Ishiura H, Takahashi Y, Tsuji S, Le Ber I, Brice A, Drepper C, Williams N, Kirby J, Shaw P, Hardy J, Tienari PJ, Heutink P, Morris HR, Pickering-Brown S, Traynor BJ, Chromosome 9-ALS/FTD Consortium, French research network on FTL/FTLD/ALS, ITALSGEN Consortium. Frequency of the C9orf72 hexanucleotide repeat expansion in patients with amyotrophic lateral sclerosis and frontotemporal dementia: a cross-sectional study. *Lancet Neurol* 2012;11:323–30.
- 31 Mehta PR, Jones AR, Opie-Martin S, Shatunov A, Iacoangeli A, Al Khleifat A, Smith BN, Topp S, Morrison KE, Shaw PJ, Shaw CE, Morgan S, Pittman A, Al-Chalabi A. Younger age of onset in familial amyotrophic lateral sclerosis is a result of pathogenic gene variants, rather than ascertainment bias. *J Neurol Neurosurg Psychiatry* 2019;90:268–71.
- 32 Chio A, Mazzini L, D'Alfonso S, Corrado L, Canosa A, Moglia C, Manera U, Bersano E, Brunetti M, Barberis M, Veldink JH, van den Berg LH, Pearce N, Sproviero W, McLaughlin R, Vajda A, Hardiman O, Rooney J, Mora G, Calvo A, Al-Chalabi A. The multistep hypothesis of ALS revisited: the role of genetic mutations. *Neurology* 2018;91:e635–42.
- 33 Andersen PM, Al-Chalabi A. Clinical genetics of amyotrophic lateral sclerosis: what do we really know? *Nat Rev Neurol* 2011;7:603–15.
- 34 Saeed M, Yang Y, Deng H-X, Hung W-Y, Siddique N, Dellefave L, Gellera C, Andersen PM, Siddique T. Age and founder effect of SOD1 A4V mutation causing ALS. *Neurology* 2009;72:1634–9.
- 35 Chio A, Borghero G, Pugliatti M, Ticca A, Calvo A, Moglia C, Mutani R, Brunetti M, Ossola I, Marrosu MG, Murru MR, Floris G, Cannas A, Parish LD, Cossu P, Abramzon Y, Johnson JO, Nalls MA, Arepalli S, Chong S, Hernandez DG, Traynor BJ, Restagno G, Italian Amyotrophic Lateral Sclerosis Genetic (ITALSGEN) Consortium. Large proportion of amyotrophic lateral sclerosis cases in sardinia due to a single founder mutation of the TARDBP gene. *Arch Neurol* 2011;68:594–8.
- 36 Kreiter N, Pal A, Lojewski X, Corcia P, Naujock M, Reinhardt P, Sterneckert J, Petri S, Wegner F, Storch A, Hermann A. Age-dependent neurodegeneration and organelle transport deficiencies in mutant TDP43 patient-derived neurons are independent of TDP43 aggregation. *Neurobiol Dis* 2018;115:167–81.