



Pineal anlage tumor: clinical and diagnostic features, and rationales for treatment

Denise Obrecht-Sturm¹ · Elke Pfaff^{2,3} · Martin Mynarek^{1,4} · Brigitte Bison⁵ · Martina Rodehüser⁶ · Martina Becker⁷ · Silke Kietz⁸ · Stefan M. Pfister^{2,3,9} · David T. Jones^{2,3} · Dominik Sturm^{2,3,9} · Andreas von Deimling^{10,11} · Felix Sahm^{2,10,11} · Rolf-Dieter Kortmann¹² · Rudolf Schwarz¹³ · Torsten Pietsch¹⁴ · Gudrun Fleischhack¹⁵ · Stefan Rutkowski¹

Received: 12 November 2023 / Accepted: 15 December 2023 / Published online: 22 January 2024
© The Author(s) 2024

Abstract

Purpose To provide a treatment-focused review and develop basic treatment guidelines for patients diagnosed with pineal anlage tumor (PAT).

Methods Prospectively collected data of three patients with pineal anlage tumor from Germany was combined with clinical details and treatment information from 17 published cases.

Results Overall, 20 cases of PAT were identified (3 not previously reported German cases, 17 cases from published reports). Age at diagnosis ranged from 0.3 to 35.0 (median: 3.2 ± 7.8) years. All but three cases were diagnosed before the age of three years. For three cases, metastatic disease at initial staging was described. All patients underwent tumor surgery (gross-total resection: 9, subtotal resection/biopsy: 9, extent of resection unknown: 2). 15/20 patients were alive at last follow-up. Median follow-up for 10/15 surviving patients with available follow-up and treatment data was 2.4 years (0.3–6.5). Relapse was reported for 3 patients within 0.8 years after diagnosis. Five patients died, 3 after relapse and 2 from early postoperative complications. Two-year-progression-free- and -overall survival were $65.2 \pm 12.7\%$ and $49.2 \pm 18.2\%$, respectively. All 4 patients who received intensive chemotherapy including high-dose chemotherapy combined with radiotherapy (2 focal, 2 craniospinal [CSI]) had no recurrence. Focal radiotherapy- and CSI-free survival rates in 13 evaluable patients were 46.2% (6/13) and 61.5% (8/13), respectively.

Conclusion PAT is an aggressive disease mostly affecting young children. Therefore, adjuvant therapy using intensive chemotherapy and considering radiotherapy appears to comprise an appropriate treatment strategy. Reporting further cases is crucial to evaluate distinct treatment strategies.

Keywords PINEAL anlage tumor · Pineoblastoma · Pineal gland

Introduction

Pineal anlage tumor (PAT) is an extremely rare histological diagnosis first described by Schmidbauer et al. [1], not yet defined as a distinct tumor type in the most recent WHO classification of tumors of the central nervous system [2, 3]. Since the WHO classification of 2007, PAT is described as a rare variant of pineoblastoma with melanotic, cartilaginous and/or rhabdomyoblastic differentiation [4–6]. Histologically, this primary pineal tumor is characterized by heterogeneous elements of neuroepithelial and ectomesenchymal tissue, but without endodermal structures [1]. They

are similar to retinal anlage tumor of the jaw, which led to its terminology [1, 7]. These tumors are thought of as highly aggressive and are associated with poor prognosis [8]. However, assumptions have been made that there are tumors which meet some characteristics of PAT, while lacking primitive features [8, 9]. This led to the proposal to differentiate such tumors from the initially described tumors by Schmidbauer et al., because the latter tumors might require different adjuvant therapy strategies [8].

Overall, due to the rarity of this tumor type, reported treatment strategies are diverse and the ideal strategy e.g. using pineoblastoma protocols remains unclear [5].

Here, we report on three unpublished cases of tumors histologically classified as pineal anlage tumor and reviewed the literature focusing on clinical features and treatment.

Patients and methods

Data of 3 patients with pineal anlage tumor treated in Germany from 2000 to 2020 were compiled. This study was performed in line with the principles of the Declaration of Helsinki and from all three patients, written informed consent was obtained from patients, parents, or legal guardians for publication of their data.

DNA methylation profiling and panel sequencing was performed as part of clinical routine or relapse work-up. The Heidelberg Brain Tumor Classifier Version v12b5 (www.molecularneuropathology.com) was used for tumor classification by methylation. Next generation panel sequencing was performed analogous to procedures described by Sahm et al. [10]. Simultaneously, DNA was also derived from blood to match results with germline information.

In addition, a literature review via Pubmed.gov using “pineal anlage tumor” and “pineal” as search terms on June 9th 2022 was performed and 17 further cases of PAT were

identified. For these cases, reported clinical details were analyzed in detail.

Data of the cases are summarized in Table 1. Statistical analyses were explorative and were performed using IBM® SPSS® Version 25. Kaplan–Meier method was used for survival estimation.

Results

Reports of 3 German cases

Patient 1

Clinical presentation This male patient was diagnosed in 2015 at the age of 0.9 years after he presented with squinting, ataxia and signs of hydrocephalus.

Histology and molecular information Histologically, the tumor was classified as PAT by the local pathologist and confirmed by national central neuropathology review. It showed the typical combination of immature neuroepithe-

Table 1 Detailed overview of all published cases of pineal anlage tumor including 3 new cases from Germany

Case No.	Report	Country	Gender	Age at diagnosis [y]	Initial staging*		DNA methylation results	Adjuvant treatment during primary therapy	Relapse or progression [y]	Last reported survival status	Follow-up [y]
					R	M					
1	This report	Germany	m	0.9	R0	N/D	v12b5: PB, FOXR2 (score: 1)	1. 3 × CARBO/ETO-96h; MTX i.ventr. (-) 2. Tandem-HDCT + ACST	metastatic [0.3]	dead	1.6
2	This report	Germany	f	0.4	R3-4	M0	v12b5: PB, FOXR2 (score: 1)	1. 3 × CARBO/ETO-96h; MTX i.ventr. (-) 2. Tandem-HDCT + ACST 3. Oral MCT (Trofosamide/VP-16) 4. Focal RT (59.4 Gy) + VCR i.v.	no	alive	6.5
3	This report	Germany	m	1.0	R3-4	N/D	N/D	1. 3 × CARBO/ETO-96h; MTX i.ventr. (+) 2. Tandem-HDCT + ACST	no	alive	3.5
4	Scherpeltz et al.	USA	F	1.1	R4	M3	Copy number gains chr. 1q and 12q	1. Chemo analogous Children's Cancer Group 99703 2. Re-surgery → subtotal 3. HDCT + ACST (3 × Carbo/Thiotepa) 4. RT (CSI 18 Gy, tumor bed boost up to 54Gy; boost spinal metastases up to 45 Gy)	no	alive	4.6
5	Scherpeltz et al.	USA	m	0.9	R4	M0	Copy number gains of chr. 8 and 9p, and losses chr. 3p and 5q	1. Chemo analogous Children's Cancer Group 99703 2. HDCT + ACST (3 × Carbo/Thiotepa) 3. Focal RT (54 Gy)	no	alive	4.2
6	Cambuzzi et al.	Brazil	f	3.0	R3-4	N/D		Surgery only; death due to postoperative respiratory complications	no	dead	0.3
7	Lopez-Nunez et al.	USA	m	1.0	R4	N/D	v11b4: PLEX PED B (score 0.69), MB classifier: subtype III (score: 0.99) relapse: MB, G3 (Score: 0.99), subtype III (score 0.4)	Multiple surgeries	primary tumor [0.2]	dead	1.3
8	Li et al.	China	m	0.8	R0	N/D		Surgery only	no	alive	0.3
9	Uppal et al.	India	f	35.0	R0	M3		1. HDCT + ACST 2. RT (CSI, dose not reported)	no	alive	1.1
10	Homma et al.	Japan	m	5.0	R4	M+		N/A	N/A	N/A	N/A
11	Ramdasi et al.	India	m	0.8	R1-2	M0		no adjuvant therapy; death due to postoperative sepsis	no	dead	0.1
12	Rodriguez-Velasco et al.	Mexico	N/A	0.7	R0	N/D		2 cycles Carboplatin/Irfsfamide	no	alive	1.3
13	Ajayi et al.	USA	f	0.9	R1-2	M0		“induction chemotherapy”	no	alive	1.0
14	Olajay et al.	USA	m	0.4	R0	N/D		5 cycles Head Start III, D2	no	alive	1.0
15	Ahuja et al.	India	m	0.3	R3-4	N/D		4 cycles “chemotherapy”	no	alive	0.5
16	Berns and Pearl	USA	m	0.8	N/A	M0		N/A	N/A	N/A	N/A
17	Gudinaviciene et al.	Lithuania	m	0.8	R1-2	N/D		N/A	N/A	N/A	N/A
18	McGrogan et al.	France	m	0.8	R3-4	N/D		chemotherapy not further specified	primary tumor and metastatic [0.8]	dead	0.8
19	Raisanen et al.	USA	N/A	1.0	R1-2	M0		N/A	N/A	N/A	N/A
20	Schmidbauer et al.	Austria	f	9.0	N/A	N/D		N/A	primary tumor [0.4]	dead	0.4

*Initial staging was defined as status prior to start of adjuvant therapy or, if no adjuvant therapy was reported, after final surgery during initial work-up.

Colors matching the treatment strategies analogous to Figs. 2 und 3.

f female, m male, N/A not reported, y years, R0 no residual tumor, R1-2 near/gross total resection, R3-4 large residual or biopsy only, N/D no metastases described or no report regarding metastatic status, M0 no metastases, i.v. intravenously, i.ventr. intraventricularly, (-): not applied, (+) applied

lial and ectomesenchymal components without endodermal structures and all displayed melanocytic differentiation.

The tumor's methylation profile matched with PB, FOXR2 (Fig. 1B, C). Methylation profiles of cases 1 and 2 are plotted via tSNE in Fig. 1C together with published cases from molecular consensus study by Liu et al. (pineoblastoma) and Capper et al. (medulloblastoma) [14, 15]. Next generation panel sequencing did not detect any somatic mutations. Further, family history did not suggest an increased incidence of cancer in the family, therefore no genetic counselling and testing was performed.

Neuroradiological presentation (supplemental Fig. 1) The initial MRI demonstrated a mass of high cellularity in the pineal region measuring an estimated volume of 5.5 ml. It was reaching into the aqueduct of Sylvius (black arrows 1.1.1–1.1.3) and causing a supratentorial hydrocephalus (1.1.1–1.1.5). A bright spot on T1WI centered in the mass (grey arrow 1.1.2) was most likely a calcification. The early postoperative MRI (1.2.1–1.1.5) displayed some postoperative change and a partly fluid, partly air-filled subdural compartment along the left cerebral hemisphere and blood clots in the resection cavity (proven by follow up). No tumor residue was detectable. An external ventricular drainage was placed in the left side ventricle (white asterisk 1.2.2). Postoperatively small bilateral hygromas along the cerebral hemispheres (wider on the right than on the left side, black asterisks), and after shunt-placement (catheter in the right side-ventricle, white asterisk) diminished width of the ventricles were documented (1.3.1–1.3.2). Next MRI (conducted shortly after treatment initiation) showed progressive disease with multiple meningeal seedings along the wall of both lateral ventricles and the third ventricle having the same signal on T2WI and restricted diffusion as the primary tumor had initially (white arrows). No local residue was detectable (1.4.1–1.4.5).

Treatment details, response and outcome After complete resection, the patient received systemic chemotherapy analogous to the HIT2000 trial scheme for PNET/pineoblastoma (NCT: 00303810) [11, 12] without application of intraventricular treatment (see Fig. 1A for treatment details). The next MRI revealed new meningeal seeding (M2). As this MRI was performed early after treatment initiation, this progression was rather classified as potential progression before treatment initiation and therefore not rated as relapse for the survival analysis in this project. After 3 cycles of CARBO/ETO-96 h, tandem-high-dose chemotherapy (HDCT) with autologous stem cell transplantation (ASCT) was subsequently performed, leading to a complete remission confirmed by national central radiology review (supplemental Fig. 1, 1.5.1–1.5.5). At the end of primary treatment, the patient presented no neurologi-

cal or neuro-developmental sequelae. Three months later the tumor recurred again (white arrowheads) with cranial (white arrows) and spinal metastases (Black arrows; supplemental Fig. 1, 1.6.1–1.6.5). Relapse therapy was performed using metronomic treatment *RIST* (sirolimus, irinotecan, dasatinib, temozolomide) [13]. This increased rapidly on follow up (supplemental Fig. 1, 1.7.1–1.7.5) partly with laminar (white arrowhead) and nodular lesions (white small arrows, supplemental Fig. 1, 1.7.2 and 1.7.5), partly with broad bands of confluent dissemination demonstrating an intense restriction of diffusion (white arrows, supplemental Fig. 1, 1.7.1, 1.7.3, 1.7.4) like the primary tumor but only little contrast enhancement as known from other aggressive tumors after therapy (e.g. in medulloblastomas). Despite the low quality of the spinal MRI the progression becomes obvious (white arrows supplemental Fig. 1, 1.7.5). Radiotherapy (RT) was discussed, but due to the extent of metastases and age considered as contraindicated. He died from disease progression one year after the end of first-line therapy.

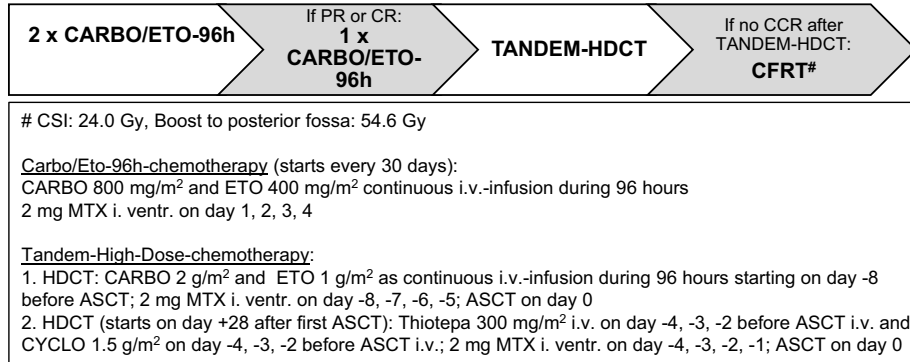
Patient 2

Clinical presentation This 0.4-year-old girl was diagnosed with pineal anlage tumor in 2016. She presented with signs of hydrocephalus, dehydration after massive vomiting, myoclonies and sunset phenomenon.

Histology and molecular information Histological presentation of the tumor matched to the tumor from patient 1 and was again confirmed by central review. The tumor's methylation profile also matched with PB, FOXR2 (Fig. 1B, C). Next generation panel sequencing did not detect any somatic mutations and family history did not suggest an increased incidence of cancer in the family, therefore no genetic counselling and testing was performed.

Neuroradiological presentation (supplemental Fig. 2) This patient presented with a tumor of the pineal region. It showed intermediate to mildly elevated signal on T2 weighted images (T2WI) and bleeding interfering with the diffusion weighted imaging. It demonstrated an inhomogeneous intermediate contrast enhancement. The aspects resemble other tumors of high cellularity in this localization such as pineoblastoma. In contrast to most germ cell tumors in this localization, perifocal edema was not observed. Initially, the tumor was only biopsied. Before adjuvant treatment initiation, rapid progression occurred and second surgery with the aim of maximal safe resection was performed; residual tumor with an estimated volume of 23.9 ml remained. Spinal MRI and CSF by lumbar puncture showed no evidence for metastases.

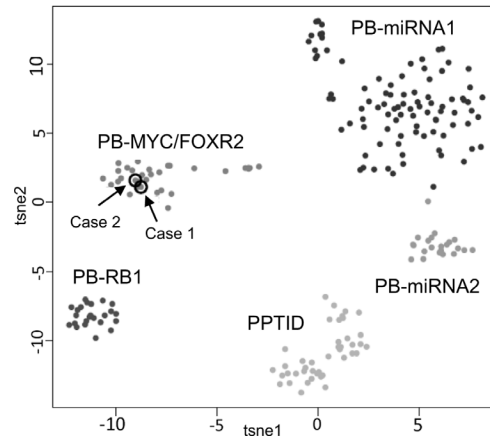
A Treatment strategy for 3 HIT-MED cases



B Molecular information for 3 HIT-MED cases

Case No.	DNA-Methylation (v12.5)	Panel-Sequencing
1	PB, FOXR2 (Score: 1)	no mutation identified
2	PB, FOXR2 (Score: 1)	no mutation identified
3	N/A	N/A

C Explorative tSNE Plot



D Initial MRI imaging (T2, sag.) of 3 HIT-MED cases

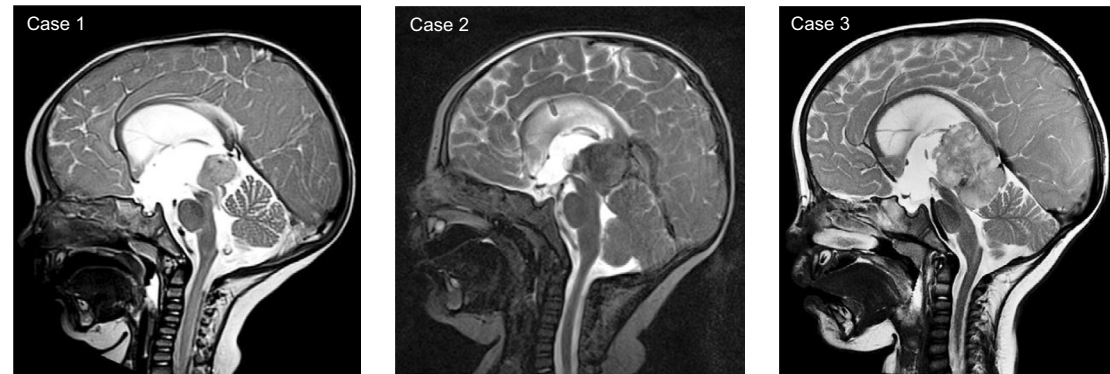


Fig. 1 Treatment details and molecular information for HIT-MED cases. In all three cases, patients started treatment analogous to HIT-MED Guidance recommendations for pineoblastoma, which is shown here. **A** Treatment strategy for 3 HIT-MED cases, **B** Molecular information for 3 HIT-MED cases, **C** Explorative tSNE Plot, Reference cases from Liu et al., Acta Neuropathol. 2021 May; 141(5):771–785 (pineoblastoma) and Capper et al., Nature. 2018 Mar 22; 555(7697):469–474 (medulloblastoma), *PR* partial response, *(C)CR* (continuous) complete remission, *i.v.* intravenous, *i. ventr.* intraventricularly, *HDCT* high-dose chemotherapy, *ASCT* autologous stem-cell transplantation

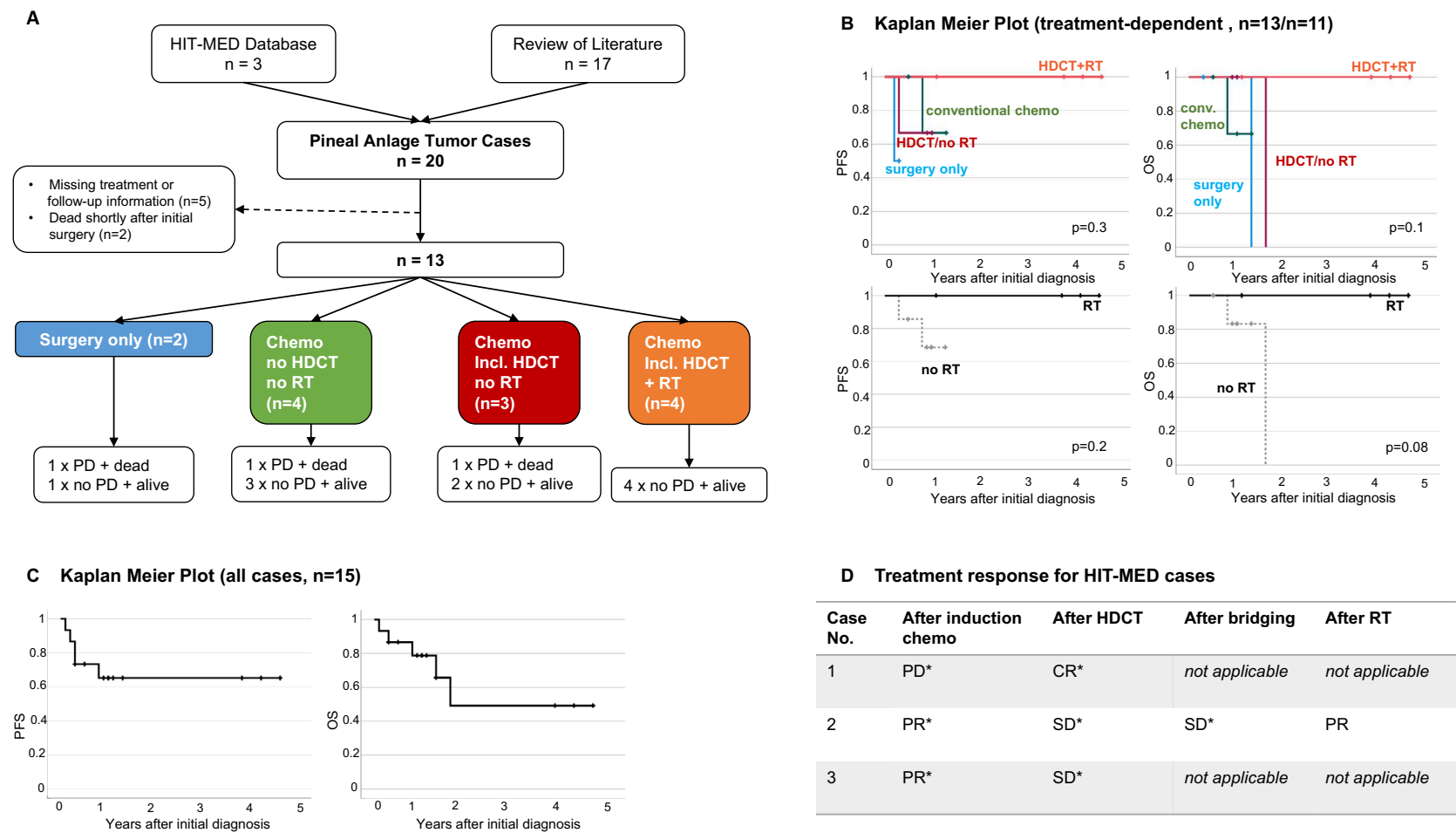


Fig. 2 Clinical courses and Kaplan Meier Survival Estimation. **A** Overview of individual cases' clinical course incl. treatment and outcomes, **B** Kaplan–Meier Plot (treatment-dependent) for $n=13$ cases (above) with available treatment and follow-up data ($n=2$ excluded due to death from early postoperative complications) and for $n=11$ cases (below) with adjuvant treatment ($n=2$ excluded due to surgery only), **C** Kaplan–Meier Plot (all cases with available treatment and follow-up data), **D** Treatment response for HIT-MED cases. *centrally reviewed. *PD* progressive disease, *SD* stable disease, *PR* partial response, *CR* complete remission, *HDCT* high-dose chemotherapy, *RT* radiotherapy

Treatment details, response and outcome The patient received 3 cycles of CARBO/ETO-96 h without application of intraventricular treatment, leading to a partial response (PR). Regarding the residual tumor mass, biopsy was performed showing no vital tumor cells. Tandem-high-dose chemotherapy with autologous stem cell transplantation was performed, resulting in a stable disease. The second HDCT course (thiotepa and cyclophosphamide i.v., methotrexate (MTX) intraventricularly) was complicated by hepatic veno-occlusive disease, which was successfully treated without long-term complications. Afterwards, the patient received oral maintenance therapy (6 cycles trofosfamide / etoposide orally and etoposide intraventricularly) until she reached the age of 18 months and qualified for focal RT. During this time, the tumor was stable. Focal RT was performed using proton beam up to 59.4 Gy to the residual tumor volume. Vincristine was administered intravenously simultaneously on a weekly basis. She was alive at last follow-up 6.5 years after initial diagnosis without further therapy. Residual MRI findings are interpreted as scar tissue. At this time, she did not have any residual neurological or neuropsychological residual. Notably, the girl was found to have a secondary malignancy 6 years after diagnosis of PAT. Follow-up MRI showed a lesion in the right cerebellar hemisphere (supplemental Fig. 2.5). Biopsy was performed and revealed a high grade glioma. Thereafter, she was lost to follow-up.

Patient 3

Clinical presentation The pineal anlage tumor was diagnosed for this male infant in 2018 at the age of 1.0 years. Symptoms were signs of hydrocephalus occlusus, Parinaud's syndrome and fatigue.

Histology and molecular information Histologically, the tumor was also classified as PAT by the local pathologist and confirmed by national central neuropathology review and showed the typical combination of immature neuroepithelial and ectomesenchymal components without endodermal structures and all displayed melanocytic differentiation, but molecular results were implausible. Unfortunately, even re-assessment of a second tumor sample and matching blood were analyzed resulting in implausible results again. We therefore assumed that the tumor samples sent for molecular diagnostic did not belong to patients 3. Further tumor material was not available.

Next generation panel sequencing didn't reveal an evidence for germline mutations in the genes covered by this panel. Further, family history did not suggest an increased incidence of cancer, therefore no genetic counselling and testing was performed.

Neuroradiological presentation (supplemental Fig. 3) The patient presented with a large tumor reaching from the pineal region supratentorially into the posterior part of the third ventricle and infratentorially into the tectal region and the quadrigeminal cistern, compressing the brainstem and

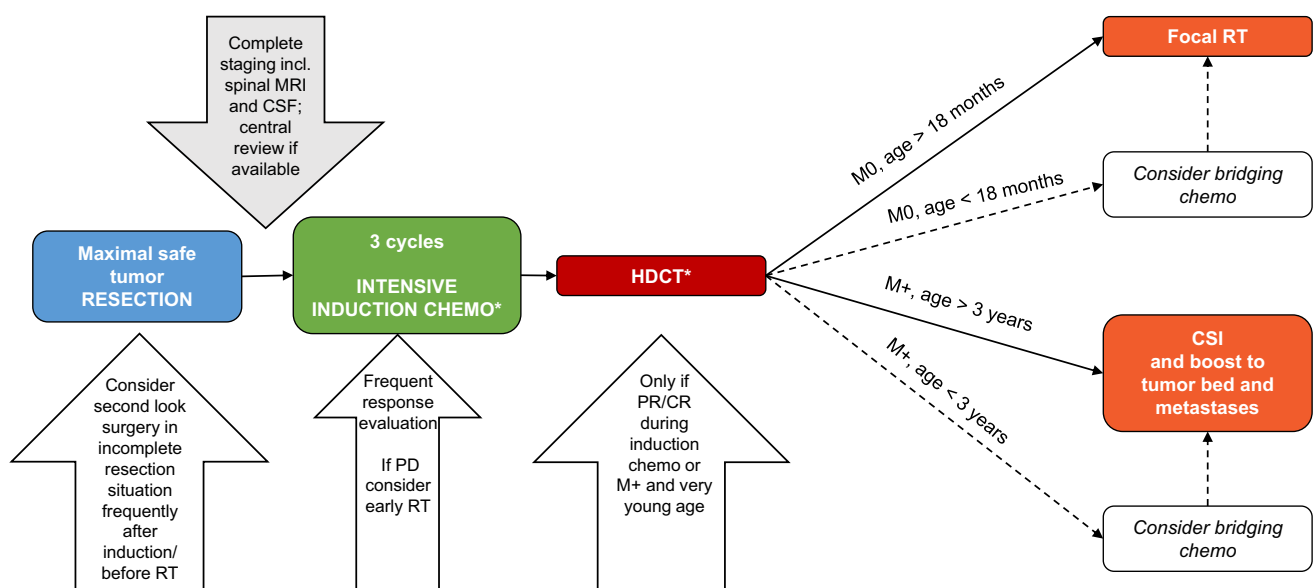


Fig. 3 Proposed flowchart to help with future therapeutic decision making for Pineal Anlage Tumor. *according to national standards. CSF cerebrospinal fluid, RT radiotherapy, CSI craniospinal irradiation, HDCT high-dose chemotherapy, PD progressive disease, PR partial response, CR complete remission, M0: localized disease/no metastases, M+: disseminated disease

cerebellum (Fig. 1D) with radiologically unclear origin. As in patients 1 and 2 the tumor again showed intermediate to mildly elevated signal on T2 weighted images (T2WI), and intermediate to restricted diffusion as a sign of high cellularity as well as inhomogeneous intermediate contrast enhancement. Partial resection was performed with three small residues remaining. Cranial and spinal MRI did not show metastases by national central imaging review.

Treatment details, response and outcome The patient received 3 cycles of CARBO/ETO-96 h systemic chemotherapy and intraventricular MTX (2.0 mg absolute single dose, repetitive every 24 h on day 1–4) and achieved a partial response. It was followed by tandem-high-dose chemotherapy and autologous stem cell transplantation. MRI response monitoring showed stable disease, so a national neurosurgical review panel was summoned. The panel recommended re-surgery only in case of progressive disease. 3.1 years after initial surgery the patient is still alive and without relapse. He still suffers from Parinaud's syndrome and associated coordination difficulties. Yet, his intellectual development appears age-appropriate.

Demographic details of the assembled cohort

Taking into account all cases of PAT identified in the literature and the three additional German cases, in 2023, there are 20 known and reported cases (Table 1) [1, 5, 8, 9, 16–27]. Cases were published from all over the world starting in 1989 until July 2022. Age at diagnosis ranged from 0.3 to 35.0 years. All but three cases were diagnosed before the age of 3 years. All but one case affected pediatric patients. The tumor affected predominantly male patients with a male/female ratio of 2:1.

Initial staging and surgery

In all cases, tumors originated in the pineal region, affecting infra- and supratentorial structures. Dissemination at initial diagnosis was reported for three cases and showed spinal involvement in two. In all cases, surgery was the first therapeutic element leading to the histological diagnosis of pineal anlage tumor. Three patients underwent re-surgery prior to start of adjuvant treatment. Further, in two patients, re-surgery was performed during adjuvant chemotherapy and another patient was treated with multiple surgeries only. Overall, complete resection was reported for five patients and gross-total resection for a total of 9 patients.

Postoperative clinical courses

Information about postoperative adjuvant treatment was available for 15/20 (75%) cases. Two patients died shortly

after surgery due to postoperative complications (sepsis, respiratory complication). For another two patients, available information indicated that no adjuvant chemo- or radiotherapy was applied. One of them received multiple surgeries. Thus, the subsequent analysis was performed on 11 cases who had received adjuvant treatment. In all 11 cases, treatment regimens consisted of intensive chemotherapy of different national standards (Table 1). All three patients from Germany, on which we have reported here, received the same induction chemotherapy with CARBO/ETO-96 h followed by tandem-HDCT and ASCT. Treatment response for these patients is displayed in Fig. 2D. Further, 4 more patients from the literature received HDCT with ASCT after induction chemotherapy resulting in a series of 7 cases. In one patient hepatic sinusoidal obstruction syndrome occurred.

Four patients received radiotherapy, all after HDCT. RT was focal to the tumor bed for two non-metastasized cases and consisted of a craniospinal irradiation (CSI) followed by boosts to the tumor bed and metastases for two patients with spinal dissemination. Irradiation dosage is displayed by Table 1, if reported.

Oral maintenance chemotherapy was used as bridging for one patient between HDCT and focal RT until the age of 18 months.

Outcome and postoperative clinical courses were reported for 15/20 cases (missing information for cases 10, 16, 17, 19 and 20). For these cases, 2-year progression-free survival (PFS) was $65.2 \pm 12.7\%$ (Fig. 2C). Estimated 2-year overall survival (OS) was $49.2 \pm 18.2\%$.

Treatment-related outcomes

Two additional cases who died from direct postoperative complications (cases number 6 and 11) were excluded from the further treatment-focused survival analyses, leaving 13 patients in the study cohort. Relapse or disease progression occurred in 3/13 patients. Median time to relapse or progression was 0.4 (0.2–0.8) years. All three patients with relapse or disease progression died. Median follow-up for 10 surviving patients was 2.4 years (0.3–6.5). All 4 patients who received high-dose chemotherapy combined with RT (focal RT: 2, CSI: 2) had no recurrence and were alive at last follow-up (Fig. 2B). Nevertheless, there were also patients, who survived their disease after surgery only ($n=1$), conventional chemotherapy combined with RT ($n=3$) or chemotherapy including HDCT without RT ($n=3$). Patients who experienced relapse and died subsequently due to disease progression were treated with surgery only ($n=1$), additional chemotherapy without HDCT ($n=1$) and HDCT without RT ($n=1$).

Focal RT- and CSI-free survival rates were 46.2% (6/13) and 61.5% (8/13), respectively.

Kaplan Meier survival estimation showed a trend for superior survival for patients, who received RT (focal or CSI) during their primary treatment ($p = 0.08$; Fig. 2B).

Discussion

This project aimed at evaluating treatment strategies for PAT. As these tumors histologically can be clearly distinct from other pineal region tumors, the question is, whether these tumors should be treated similar to other pineal region tumors e.g. pineoblastoma. As specific risk-adapted treatment strategies for specific molecular pineoblastoma subgroups may be established in the future, it appears reasonable to independently analyze treatment strategies for PAT.

To date, most case reports focused on histological descriptions with frequently missing clinical details and short follow-up times. Furthermore, publication bias cannot be excluded. These conditions only allow for very limited statistical analyses and conclusions for treatment recommendations need to be drawn with caution.

Nevertheless, sharing information about the clinical presentation and disease course of pineal anlage tumor is important. Therefore, we summarized all published cases and their clinical information.

Pineal anlage tumor primarily mostly affects young children during the first years of life. Analogous to other childhood embryonal brain tumor entities as e.g. medulloblastoma, males are affected more often than females.

A detailed staging process including spinal MRI and CSF cytology should always be part of the initial clinical work-up of these patients as already suggested by Ajayi et al. [5].

Radiologically, PATs are often of large size at first diagnosis and present with circulatory dysfunction of the cerebrospinal fluid and consecutive occlusive hydrocephalus. Furthermore, these tumors show heterogeneous enhancement. Using computer tomography, the tumor is hyperdense, often cystic or calcified. In MRI, the tumor is T1-iso- or hypointense and T2-isointense compared to the surrounding brain parenchyma, and shows diffusion restriction [5, 8, 24].

Nevertheless to date, no specific radiological characteristics are described to identify PAT by MRI only [5]. Therefore, upfront surgery with the aim to obtain a tissue-based diagnosis seems to be reasonable in pineal masses negative for germ-cell tumor markers AFP and beta-HCG as well as negative medical history of a trilateral retinoblastoma.

In the reported German cases, biological relationship to pineoblastoma (PIN MYC/FOXR2) was found. Apart from this, similarity regarding the methylation signature of choroid plexus tumor at initial diagnosis and medulloblastoma at relapse for one case was described by Lopez-Nunez et al. [18] (case 7 of this series). In fact, further biological

characterized cases need to be reported to draw a solid conclusion regarding the biology of pineal anlage tumor.

As pineal region tumors are challenging to resect, addressing a specialized neurosurgical center needs to be considered whenever possible. Maximal safe resection should be strived for, since PAT seem to show a wide range of response to adjuvant therapy and small tissue samples might show a non-representative part of the tumor resulting in a false diagnosis [5, 23]. Taking into account the high chance of recurrence, from the author's point of view, adjuvant treatment is indicated for all affected patients: PFS and OS are not yet satisfying based on this small series.

Since radiotherapy—and especially CSI that is usually considered necessary to treat embryonal tumors of the CNS – is associated with neurocognitive sequelae, when used in very young patients, intensive intravenous chemotherapy appears to be a reasonable choice. In reported cases, treatment protocols for embryonal tumors (formerly “primitive neuroectodermal tumors”) or pineoblastoma were chosen.

In this series, two patients with non-metastatic PAT and good response to induction chemotherapy were treated with focal radiotherapy after HDCT and did not relapse within the observation period. Therefore, we believe that focal RT might be considered as an additional treatment modality in patients with localized disease even at young age > 18 months. However, present data indicate that pineal anlage tumor can spread along the CNS especially during relapse. Therefore, craniospinal irradiation seems reasonable for disseminated disease, when it is not contraindicated due to young age or other conditions.

On the basis of the reported experience, we developed a flowchart to help making therapeutic decisions in these rare cases (Fig. 3). However, the optimal dose prescription and schedule within the multimodal treatment concept is still unclear and should be oriented to the recommendation and experiences of other embryonal CNS tumors in young children. Further, against the background of potential biological relationship to pineoblastoma and the fact that established treatment strategies for pineoblastoma / embryonal brain tumors appear to be efficient also in PAT, one may also discuss to follow national and international guidelines for pineoblastoma. Still, as specific treatment strategies may emerge for specific molecular subgroups of pineal region tumors, it appears reasonable to consider PAT also independently.

Finally, more knowledge needs to be obtained regarding the clinical presentation, molecular characteristics and treatment strategies of pineal anlage tumor to develop solid treatment guidelines. Therefore, we would like to encourage clinicians to share their experiences with patients suffering from rare tumors like pineal anlage tumor.

Supplementary Information The online version contains supplementary material available at <https://doi.org/10.1007/s11060-023-04547-5>.

Acknowledgements Authors thank Antje Stiegmann, Susanne Becker and Regine Riechers for their excellent data management.

Author contributions DO-S, MM, SR: Design of research. DO-S, EP, MM, BB, MR, MB, SK, SMP, DTJ, DS, AvD, FS, R-DK, RS, TP, GF: Preparation and Provision of data. DO-S: Analysis of data. DO-S, MM, SR, EP, BB: Interpretation of data. DO-S, BB, EP, MM, SR, SMP, DTJ, DS, AvD, R-DK, RS, TP, GF, SR: Manuscript writing. All authors: Final approval of the manuscript.

Funding Open Access funding enabled and organized by Projekt DEAL. This work was supported by the German Children's Cancer Foundation (Deutsche Kinderkrebsstiftung).

Data availability The datasets generated during and/or analysed during the current study are available from the corresponding author on reasonable request.

Declarations

Conflict of interest All authors declare they have no competing financial interests.

Open Access This article is licensed under a Creative Commons Attribution 4.0 International License, which permits use, sharing, adaptation, distribution and reproduction in any medium or format, as long as you give appropriate credit to the original author(s) and the source, provide a link to the Creative Commons licence, and indicate if changes were made. The images or other third party material in this article are included in the article's Creative Commons licence, unless indicated otherwise in a credit line to the material. If material is not included in the article's Creative Commons licence and your intended use is not permitted by statutory regulation or exceeds the permitted use, you will need to obtain permission directly from the copyright holder. To view a copy of this licence, visit <http://creativecommons.org/licenses/by/4.0/>.


References

- Schmidbauer M, Budka H, Pilz P (1989) Neuroepithelial and ectomesenchymal differentiation in a primitive pineal tumor ("pineal anlage tumor"). *Clin Neuropathol* 8:7–10
- Louis DN, Perry A, Wesseling P, Brat DJ, Cree IA, Figarella-Branger D, Hawkins C, Ng HK, Pfister SM, Reifenberger G, Soffietti R, von Deimling A, Ellison DW (2021) The 2021 WHO classification of tumors of the central nervous system: a summary. *Neuro Oncol* 23:1231–1251. <https://doi.org/10.1093/neuonc/noab106>
- (2021) Classification of Tumours Editorial Board, WHO Classification of Tumours: Central Nervous System Tumours, 5th edn.
- Fuller GN, Scheithauer BW (2007) The 2007 revised World Health Organization (WHO) classification of tumours of the central nervous system: newly codified entities. *Brain Pathol* 17:304–307. <https://doi.org/10.1111/j.1750-3639.2007.00084.x>
- Ajayi OPA, Sadanand V, Deisch J (2014) Pineal anlage tumor: case report and review of literature. *JSM Neurosurg Spine* 2(4):1035
- Louis DN, Ohgaki H, Wiestler OD, Cavenee WK, Burger PC, Jouvet A, Scheithauer BW, Kleihues P (2007) The 2007 WHO classification of tumours of the central nervous system. *Acta Neuropathol* 114:97–109. <https://doi.org/10.1007/s00401-007-0243-4>
- Jouvet A, Saint-Pierre G, Fauchon F, Privat K, Bouffet E, Ruchoux MM, Chauveinc L, Fevre-Montange M (2000) Pineal parenchymal tumors: a correlation of histological features with prognosis in 66 cases. *Brain Pathol* 10:49–60. <https://doi.org/10.1111/j.1750-3639.2000.tb00242.x>
- Ramdasi R, Kothari K, Goel N, Mahore A (2015) An unusual variant of anlage tumor of pineal region in an infant. *Brain Tumor Res Treat* 3:52–55. <https://doi.org/10.14791/btrt.2015.3.1.52>
- Gudinaviciene I, Pranys D, Zheng P, Kros JM (2005) A 10-month-old boy with a large pineal tumor. *Brain Pathol* 15(263–264):267. <https://doi.org/10.1111/j.1750-3639.2005.tb00530.x>
- Sahm F, Schrimpf D, Jones DT, Meyer J, Kratz A, Reuss D, Capper D, Koelsche C, Korshunov A, Wiestler B, Buchhalter I, Milde T, Selt F, Sturm D, Kool M, Hummel M, Beyerle-Hudler M, Mawrin C, Schüller U, Jungk C, Wick A, Witt O, Platten M, Herold-Mende C, Unterberg A, Pfister SM, Wick W, von Deimling A (2016) Next-generation sequencing in routine brain tumor diagnostics enables an integrated diagnosis and identifies actionable targets. *Acta Neuropathol* 131:903–910. <https://doi.org/10.1007/s00401-015-1519-8>
- Friedrich C, von Bueren AO, von Hoff K, Gerber NU, Ottensmeier H, Deinlein F, Benesch M, Kwiecien R, Pietsch T, Warmuth-Metz M, Faldum A, Kuehl J, Kortmann RD, Rutkowski S (2013) Treatment of young children with CNS-primitive neuroectodermal tumors/pineoblastomas in the prospective multicenter trial HIT 2000 using different chemotherapy regimens and radiotherapy. *Neuro Oncol* 15:224–234. <https://doi.org/10.1093/neuonc/nos292>
- Mynarek M, Pizer B, Dufour C, van Vuurden D, Garami M, Massimino M, Fangusaro J, Davidson T, Gil-da-Costa MJ, Sterba J, Benesch M, Gerber N, Juhnke BO, Kwiecien R, Pietsch T, Kool M, Clifford S, Ellison DW, Giangaspero F, Wesseling P, Gilles F, Gottardo N, Finlay JL, Rutkowski S, von Hoff K (2017) Evaluation of age-dependent treatment strategies for children and young adults with pineoblastoma: analysis of pooled European Society for Paediatric Oncology (SIOP-E) and US Head Start data. *Neuro Oncol* 19:576–585. <https://doi.org/10.1093/neuonc/now234>
- Corbacioglu S, Steinbach D, Lode HN, Gruhn B, Fruehwald M, Broeckelmann M, Suttrop M, Escherich G, Cario G, Ehlert K, Meister B, Simon T, Debatin K-M, Kuhlen M, Feddersen I (2013) The RIST design: a molecularly targeted multimodal approach for the treatment of patients with relapsed and refractory neuroblastoma. *J Clin Oncol* 31:10017–10017. https://doi.org/10.1200/jco.2013.31.15_suppl.10017
- Capper D, Jones DTW, Sill M, Hovestadt V, Schrimpf D, Sturm D, Koelsche C, Sahm F, Chavez L, Reuss DE, Kratz A, Wefers AK, Huang K, Pajtler KW, Schweizer L, Stichel D, Olar A, Engel NW, Lindenberg K, Harter PN, Braczynski AK, Plate KH, Dohmen H, Garvalov BK, Coras R, Höltsken A, Hewer E, Beyerle-Hudler M, Schick M, Fischer R, Beschorn R, Schittenhelm J, Staszewski O, Wani K, Varlet P, Pages M, Temming P, Lohmann D, Selt F, Witt H, Milde T, Witt O, Aronica E, Giangaspero F, Rushing E, Scheurlen W, Geisenberger C, Rodriguez FJ, Becker A, Preusser M, Haberler C, Bjerkvig R, Cryan J, Farrell M, Deckert M, Hench J, Frank S, Serrano J, Kannan K, Tsirigos A, Brück W, Hofer S, Brehmer S, Seiz-Rosenhagen M, Hänggi D, Hans V, Rozsnoki S, Hansford JR, Kohlhof P, Kristensen BW, Lechner M, Lopes B, Mawrin C, Ketter R, Kulozik A, Khatib Z, Heppner F, Koch A, Jouvet A, Keohane C, Mühleisen H, Mueller W, Pohl U, Prinz M, Benner A, Zapatka M, Gottardo NG, Driever PH, Kramm CM, Müller HL, Rutkowski S, von Hoff K, Frühwald MC, Gnekow A, Fleischhack G, Tippelt S, Calaminus G, Monoranu CM, Perry A, Jones C, Jacques TS, Radlwimmer B, Gessi M, Pietsch T, Schramm J, Schackert G, Westphal M, Reifenberger G, Wesseling P, Weller M, Collins VP, Blümcke I, Bendszus M, Debus J, Huang A, Jabado N, Northcott PA, Paulus W, Gajjar A, Robinson GW, Taylor MD, Jaunmuktane Z, Ryzhova M, Platten M, Unterberg A, Wick W, Karajannis MA, Mittelbronn M, Acker T, Hartmann C, Aldape K, Schüller U, Buslei R, Lichter P, Kool M, Herold-Mende C, Ellison DW, Hasselblatt M, Snuderl M, Brandner S, Korshunov

- A, von Deimling A, Pfister SM (2018) DNA methylation-based classification of central nervous system tumours. *Nature* 555:469–474. <https://doi.org/10.1038/nature26000>
15. Liu APY, Guden B, Lin T, Orr BA, Klimo P Jr, Kumar R, Bouffet E, Gururangan S, Crawford JR, Kellie SJ, Chintagumpala M, Fisher MJ, Bowers DC, Hassall T, Indelicato DJ, Onar-Thomas A, Ellison DW, Boop FA, Merchant TE, Robinson GW, Northcott PA, Gajjar A (2020) Risk-adapted therapy and biological heterogeneity in pineoblastoma: integrated clinico-pathological analysis from the prospective, multi-center SJMB03 and SJYC07 trials. *Acta Neuropathol* 139:259–271. <https://doi.org/10.1007/s00401-019-02106-9>
 16. Scherpelz KP, Crotty EE, Paulson VA, Lockwood CM, Leary SES, Ellenbogen RG, Lee A, Ermoian RP, Vitanza NA, Cole BL (2022) Two cases of pineal anlage tumor with molecular analysis. *Pediatr Blood Cancer* 69:e29596. <https://doi.org/10.1002/pbc.29596>
 17. Cambruzzi E, Medeiros MS, da Silva J, Nascimento GBC, Zandoná NB, Kus WP (2022) Pineal anlage tumor: a case report and review of the literature. *Child's Nerv Syst: ChNS: Off J Int Soc Pediatric Neurosurg*. <https://doi.org/10.1007/s00381-021-05441-z>
 18. Lopez-Nunez O, Alaggio R, John I, Ciolfi A, Pedace L, Mastronuzzi A, Gianno F, Giangaspero F, Rossi S, Donofrio V, Cinalli G, Surrey LF, Tartaglia M, Locatelli F, Miele E (2021) Melanotic Neuroectodermal Tumor of Infancy (MNTI) and Pineal Anlage Tumor (PAT) Harbor A medulloblastoma signature by DNA methylation profiling. *Cancers (Basel)*. <https://doi.org/10.3390/cancers13040706>
 19. Li JY, Chen L (2020) [Pineal anlage tumor: report of a case]. *Zhonghua Bing Li Xue Za Zhi* 49: 1190–1192 <https://doi.org/10.3760/cma.j.cn112151-20200303-00164>
 20. Uppal DK, Madan R, Chatterjee D, Mohindra S, Bhatia V, Goyal S (2021) Pineal anlage tumor: a case report and clinico-pathological review. *Clin Neurol Neurosurg* 206:106629. <https://doi.org/10.1016/j.clineuro.2021.106629>
 21. Homma T, Hemmi A, Ohta T, Kusumi Y, Yoshino A, Hao H (2017) A rare case of a pineoblastoma with a rhabdomyoblastic component. *Neuropathology* 37:227–232. <https://doi.org/10.1111/neup.12346>
 22. Rodriguez-Velasco A, Ramirez-Reyes AG (2014) [Pineal anlage tumor in a 8-month-old boy. The first case reported in Spanish language]. *Revista medica del Instituto Mexicano del Seguro Social* 52(2):S90–93
 23. Olaya JE, Raghavan R, Totaro L, Zouros A (2010) Pineal anlage tumor in a 5-month-old boy. *J Neurosurg Pediatr* 5:636–640. <https://doi.org/10.3171/2010.2.Peds09294>
 24. Ahuja A, Sharma MC, Suri V, Sarkar C, Sharma BS, Garg A (2011) Pineal anlage tumour - a rare entity with divergent histology. *J Clin Neurosci: Off J Neurosurg Soc Australas* 18:811–813. <https://doi.org/10.1016/j.jocn.2010.09.016>
 25. Berns S, Pearl G (2006) Review of pineal anlage tumor with divergent histology. *Arch Pathol Lab Med* 130:1233–1235. <https://doi.org/10.5858/2006-130-1233-ropatw>
 26. McGrogan G, Rivel J, Vital C, Guerin J (1992) A pineal tumour with features of "pineal anlage tumour." *Acta Neurochir (Wien)* 117:73–77. <https://doi.org/10.1007/bf01400641>
 27. Raisanen J, Vogel H, Horoupian DS (1990) Primitive pineal tumor with retinoblastomatous and retinal/ciliary epithelial differentiation: an immunohistochemical study. *J Neurooncol* 9:165–170. <https://doi.org/10.1007/bf02427838>

Publisher's Note Springer Nature remains neutral with regard to jurisdictional claims in published maps and institutional affiliations.

Authors and Affiliations

Denise Obrecht-Sturm¹  · Elke Pfaff^{2,3} · Martin Mynarek^{1,4} · Brigitte Bison⁵ · Martina Rodehüser⁶ · Martina Becker⁷ · Silke Kietz⁸ · Stefan M. Pfister^{2,3,9} · David T. Jones^{2,3} · Dominik Sturm^{2,3,9} · Andreas von Deimling^{10,11} · Felix Sahn^{2,10,11} · Rolf-Dieter Kortmann¹² · Rudolf Schwarz¹³ · Torsten Pietsch¹⁴ · Gudrun Fleischhack¹⁵ · Stefan Rutkowski¹

✉ Denise Obrecht-Sturm
d.obrecht-sturm@uke.de

¹ Pediatric Hematology and Oncology, University Medical Center Hamburg-Eppendorf, Martinistr. 52, 20246 Hamburg, Germany

² Hopp Children's Cancer Center Heidelberg (KiTZ), Heidelberg, Germany

³ Division of Pediatric Glioma Research, German Cancer Research Center (DKFZ) and German Consortium for Translational Cancer Research (DKTK), Heidelberg, Germany

⁴ Mildred Scheel Cancer Career Center HaTriCS4, University Medical Center Hamburg-Eppendorf, Hamburg, Germany

⁵ Diagnostic and Interventional Neuroradiology, Faculty of Medicine, University of Augsburg, Augsburg, Germany

⁶ Pediatric Hematology and Oncology, Hospital Kassel, Kassel, Germany

⁷ Pediatric Hematology and Oncology, Medical Department, Frankfurt am Main, Germany

⁸ Department for Pediatric Hematology and Oncology, University Hospital Regensburg, Regensburg, Germany

⁹ Department of Pediatric Hematology and Oncology, Heidelberg University Hospital, Heidelberg, Germany

¹⁰ Department Neuropathology, University Hospital Heidelberg, Heidelberg, Germany

¹¹ Clinical Cooperation Unit Neuropathology, German Consortium for Translational Cancer Research (DKTK), German Cancer Research Center (DKFZ), Heidelberg, Germany

¹² Department for Radiation Therapy, University Medical Center Leipzig, Leipzig, Germany

¹³ Department for Radiotherapy, University Medical Center Hamburg-Eppendorf, Hamburg, Germany

¹⁴ Brain Tumor Reference Center of the German Society for Neuropathology and Neuroanatomy (DGNN), Institute of Neuropathology, University of Bonn, DZNE German Center for Neurodegenerative Diseases, Bonn, Germany

¹⁵ Pediatrics III, University Hospital of Essen, Essen, Germany